



AXIS - Setup Guide

When your new DC16 arrives there are a few things you will need to do to get it set up and working with your DL32R.

First, make sure you have the Dante Expansion Card installed on your DL32R. This is necessary for transmitting the audio signal from the mixer to the control surface and vice versa. You will also need a Cat5e or Cat6 cable to make your connection.



Next, we need to make sure both the DC16 and DL32R are running the exact same firmware version. In order to do this we need to force a firmware update on each piece. To do this, you will need an iPad with a Lightning connector and Master Fader 4.5, or newer, installed.



We need to do this one component at a time. When updating the DC16, the DL32R will need to be turned off. Likewise, when updating the DL32R, the DC16 will need to be off.

Complete step by step instructions for proceeding are provided on the next two pages...

For more information check out our Technical Support Library

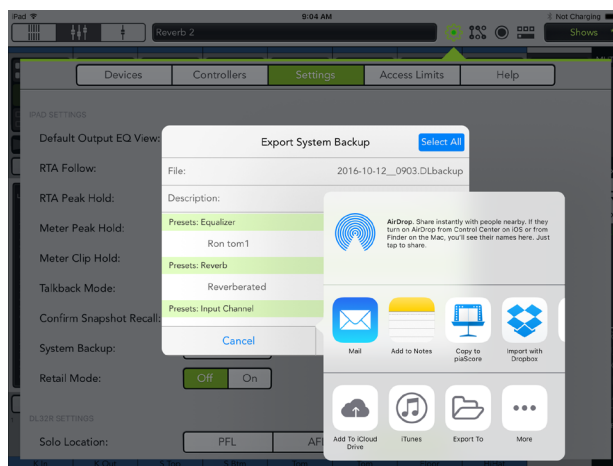


AXIS - Setup Guide

I. Backup:

- 1.1 Begin by backing up any existing shows or presets in your current version of Master Fader. System backup is found under - Tools (Gear Icon) > Settings > System Backup

Email them to yourself or save them to a file sharing service, like Dropbox.



2. Install Master Fader on your iPad from The App Store:

- 2.1 Launch the App Store on your iPad
2.2 Search for “Master Fader”
2.3 Install Master Fader 4.5.

MASTER FADER™



****If a newer version of Master Fader is present, install that instead.****

3. DL32R Hookup:



- 3.1 Install the DL Dante card into the DL32R option card slot, if not already completed.

Check out the document titled: [“Dante_Installation_Instructions.pdf”](#)

- 3.2 Connect the WiFi Router to the WiFi port on the DL32R.

Use a Cat5e or Cat6 Ethernet Cable.

For more information check out our Technical Support Library



AXIS - Setup Guide

4. Upgrade the Dante Card:

4.1 Power ON the DL32R.

4.2 Upgrade the DL Dante card to the latest Dante firmware v1.0.1.11

Check out the document titled: [“AXIS - Dante Firmware Update.pdf”](#)

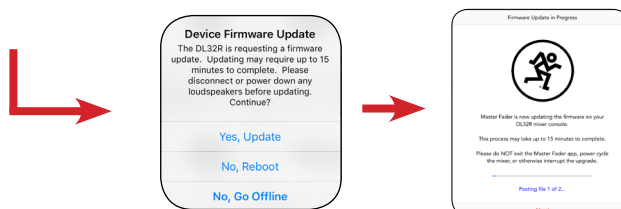


5. Upgrade the DL32R:

5.1 Connect your iPad to the DL32R WiFi Router's wireless network.

5.2 Launch Master Fader and connect to the DL32R, press the Tools (Gear Icon) button and select the Devices tab. Press the button to connect to the Wireless DL32R.

5.3 When prompted in Master Fader to upgrade the DL32R select “Yes Update”.



This update will take up to 15 minutes. It is complete when the Master Fader “Updating Firmware on your DL32R” prompt disappears, and connects to the DL32R showing a green dot in the Master Fader Tools (gear) icon.

5.4 After the DL32R update is complete, power OFF the DL32R.

DON'T SKIP THIS STEP!

For more information check out our Technical Support Library



AXIS - Setup Guide

6. Upgrade the DC16:

6.1 Power ON the DC16.

6.2 Connect the iPad to the DC16 Wired USB control port.



*****You must use the USB to Lightning cable and connect to an iPad with Lightning port.*****

6.3 When prompted in Master Fader to upgrade the DC16, select “Yes Update”.



This will take about 15 minutes. This update has multiple phases and the DC16 may power cycle.

The update is complete when all of the following items occur:

- **The Master Fader “Updating Firmware on your DC16” prompt disappears.**
- **Master Fader connects to the DC16 and shows a green dot in the Master Fader Tools (gear) icon**
- **The DC16 display no longer says “upgrading”**
- **The DC16 Channel I display says “Connected To Unassigned Change?”**

6.4 After the DC16 upgrade is complete, power OFF the DC16.

For more information check out our Technical Support Library



AXIS - Setup Guide

7. Connect the DL32R and DCI6 to form AXIS:

7.1 Connect a DCI6 Dante port to a DL32R Dante port. Use another Cat5e or Cat6 Ethernet cable.

7.2 Power ON the DL32R.

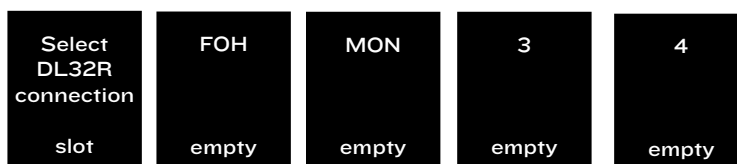
7.3 Power ON the DCI6.

7.4 Use the DCI6 Screens and encoders to connect to the DL32R.

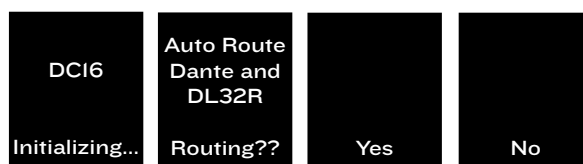
The DCI6 screens will show a list of DL32Rs to connect to. In this case, just one DL32R will be shown. Press the encoder under it.



The DCI6 screens will show a list of the 4 DL32R “slots” to connect to. Press the encoder under “Slot 1, FOH”.



The DCI6 asks you to Auto Route Dante Yes or No. Press the encoder under “YES”.



The DCI6 will now pull the show from the DL32R and synchronize giving you complete control over the DL32R.

You are now ready to start mixing with AXIS!

For more information check out our Technical Support Library