

ONYX

Producer 2•2



DAW Setup Guide





Table of Contents

Ableton	3
Cubase	5
Digital Performer	9
Logic	12
Pro Tools	16
Reason	21
Sonar	25
Studio One	32
Tracktion	37

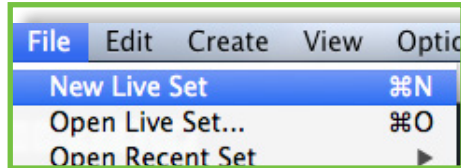


Onyx Producer 2-2 DAW Setup Guide

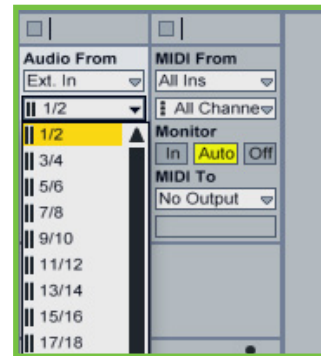
Ableton Live Setup

Example: Setting Up One Mono Track With The Onyx Producer 2-2 Input And Output Paths

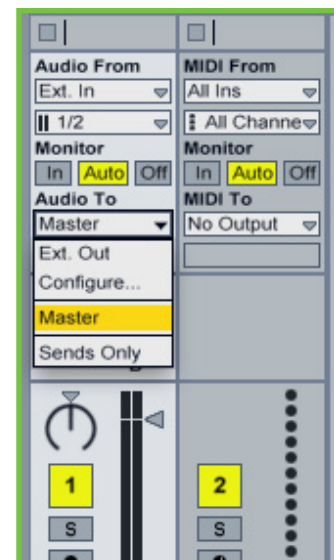
Create a new Live Set.



With the default Live Set we will want to set the included audio track to the correct I/O paths for the Onyx Producer 2-2. Have the Audio Input set to Onyx Producer 2-2 input number 1-2.



Also for that audio track you will want to make the output set to the master output.

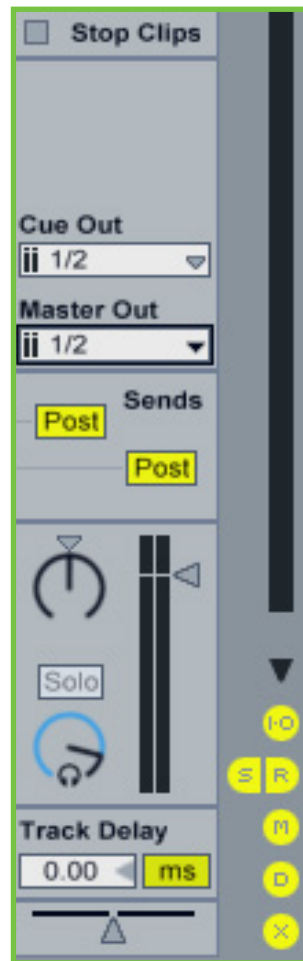




Onyx Producer 2-2 DAW Setup Guide

Ableton Live Setup (cont.)

Then for the master output section you will want that set to the **Onyx Producer 2-2** outputs.



Now your **Onyx Producer 2-2** is configured for Ableton Live.

For more information check out our [Technical Support Library](#)



Onyx Producer 2-2 DAW Setup Guide

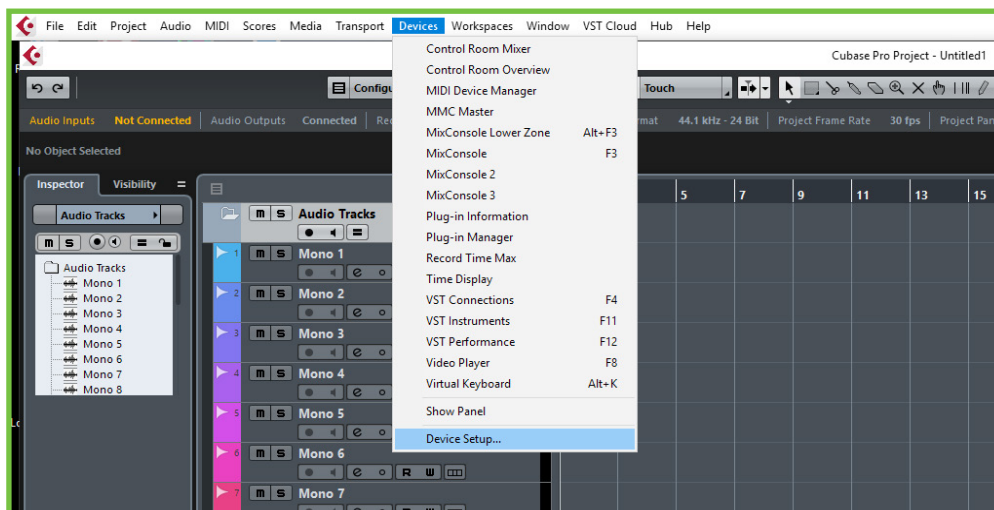
Cubase Setup



Example: Setting Up One Mono Track With The Onyx Producer 2-2 Input And Output Paths

First, open up a new Cubase project.

Now set the Onyx Producer 2-2 as the input and output device for Cubase. This is done by going to the device dropdown menu and selecting Device Setup.



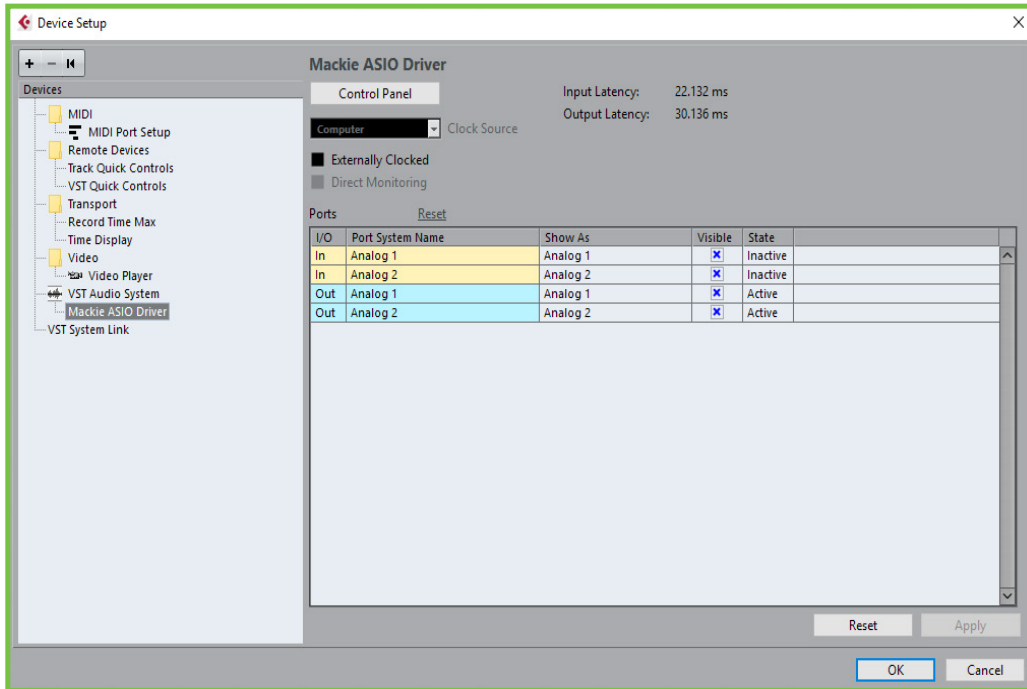
For more information check out our [Technical Support Library](#)



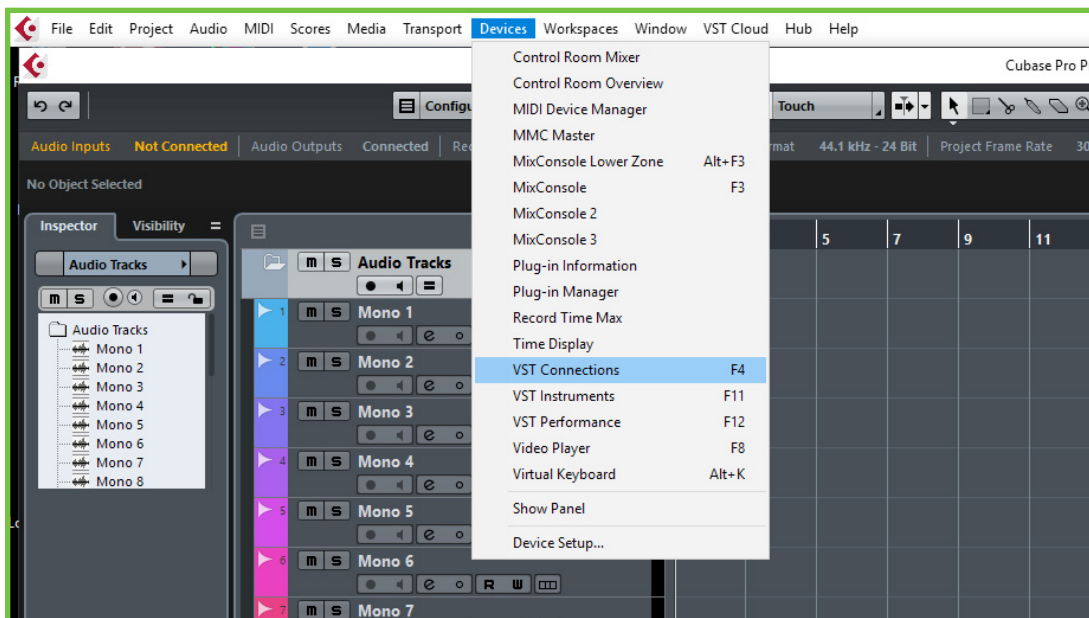
Onyx Producer 2-2 DAW Setup Guide

Cubase Setup (cont.)

In the Device Setup Menu, select the Mackie ASIO Driver in the VST Audio System. Click OK.



Next navigate to Devices>>>VST Connections.



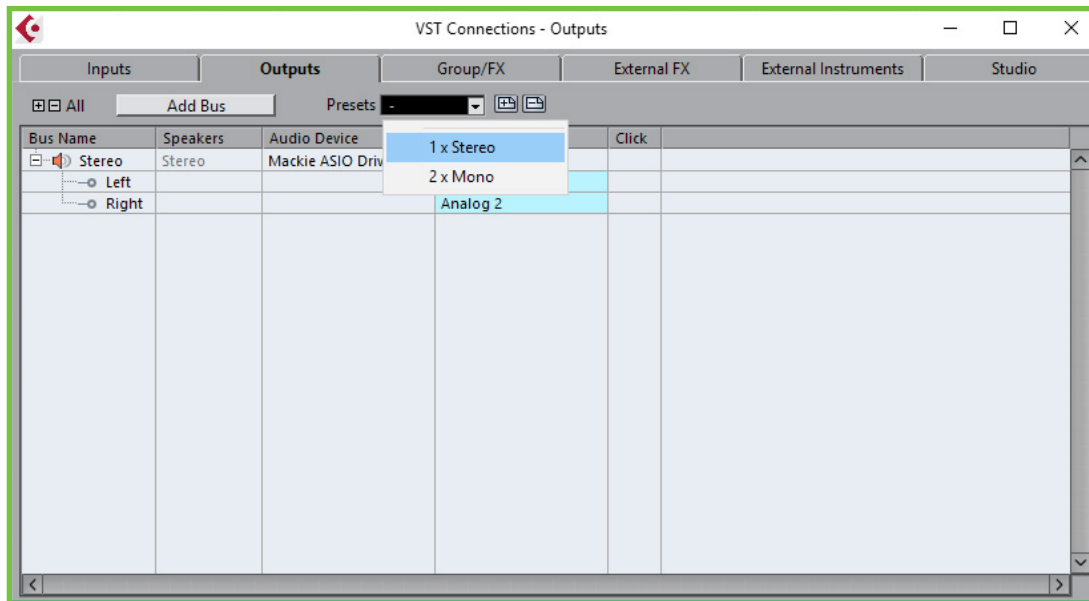
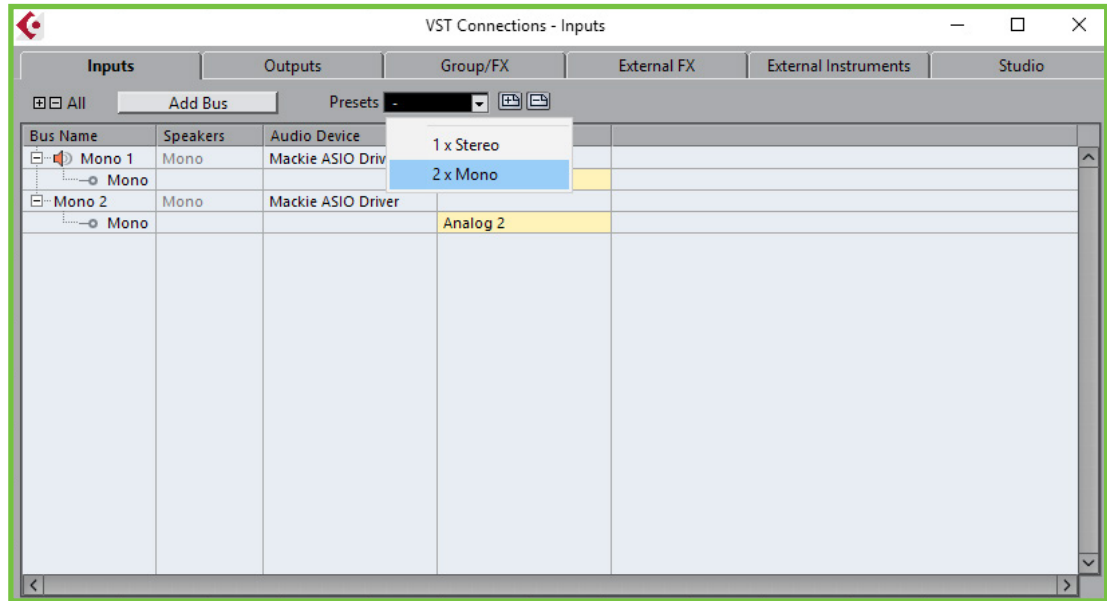
For more information check out our Technical Support Library



Onyx Producer 2-2 DAW Setup Guide

Cubase Setup (cont.)

Go to Presets and select the option for 2 x Mono channels under the Inputs tab. Select 1 x Stereo preset under the Outputs tab.



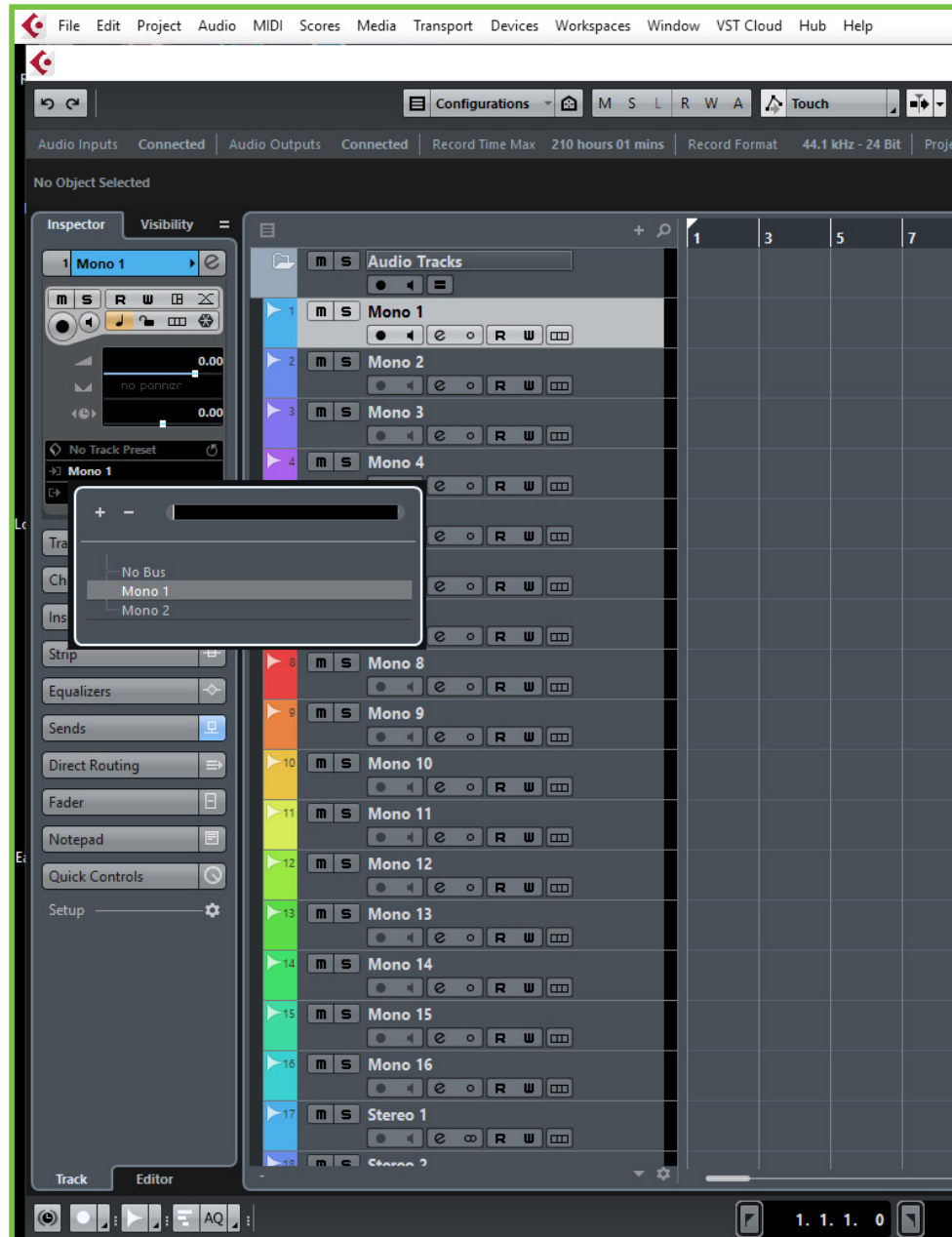
For more information check out our [Technical Support Library](#)



Onyx Producer 2-2 DAW Setup Guide

Cubase Setup (cont.)

Finally, set the track input to Mono 1 and the output to Stereo.



Your Mackie Onyx Producer 2-2 is now configured for Cubase.

For more information check out our [Technical Support Library](#)



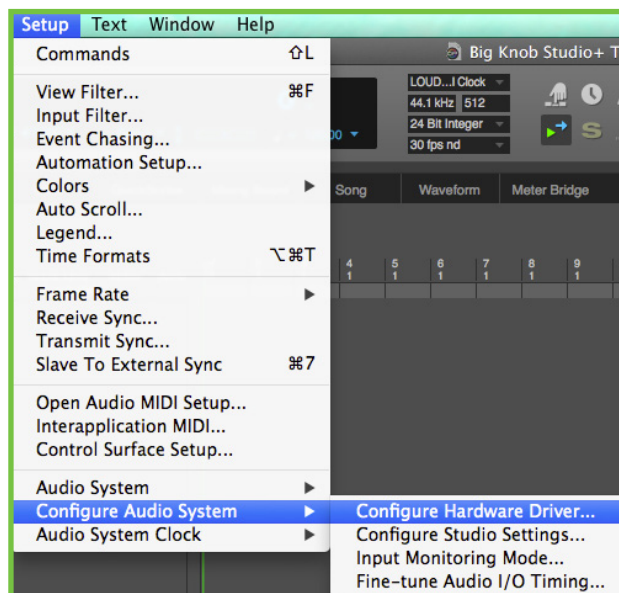
Onyx Producer 2-2 DAW Setup Guide

Digital Performer Setup

Open Digital Performer



Open the Configure Hardware Driver Window - To find the Configure Hardware Driver window you will want to go to Setup and locate the Configure Audio System menu and click on Configure Hardware Driver. (The menu steps will be slightly different on a Windows computer)



For more information check out our Technical Support Library

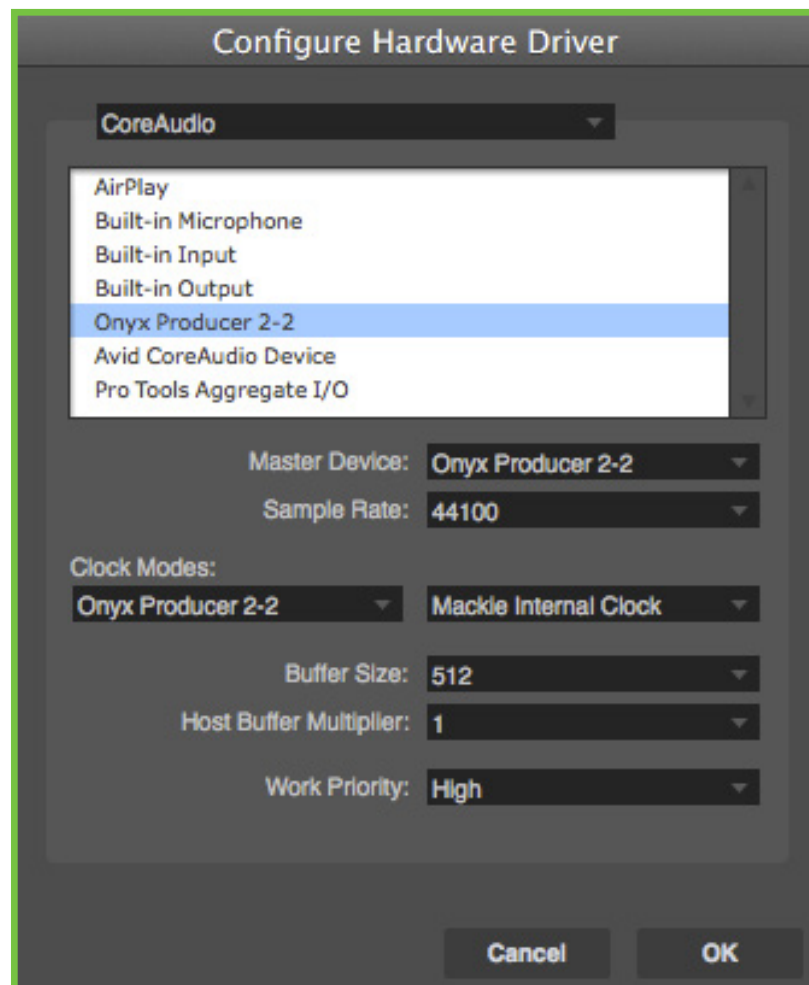


Onyx Producer 2-2 DAW Setup Guide

Digital Performer Setup (cont.)

Configure The Hardware Driver

1. Have the Driver set to CoreAudio for Mac computer.
2. Have the Driver set to AISO for PC computer.
3. Select the Onyx Producer 2-2 (input) as your hardware device.
4. The clock mode needs to be set to Onyx Producer 2-2.
5. Click Ok.



For more information check out our Technical Support Library

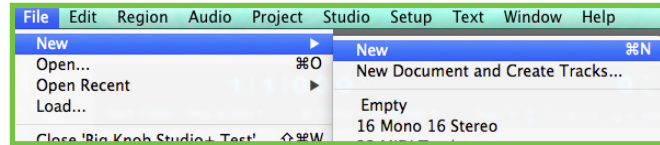


Onyx Producer 2-2 DAW Setup Guide

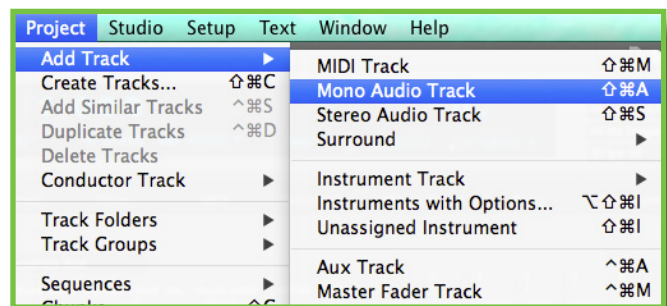
Digital Performer Setup (cont.)

Example: Setting Up One Mono Track With The Onyx Producer 2-2 Input And Output Paths

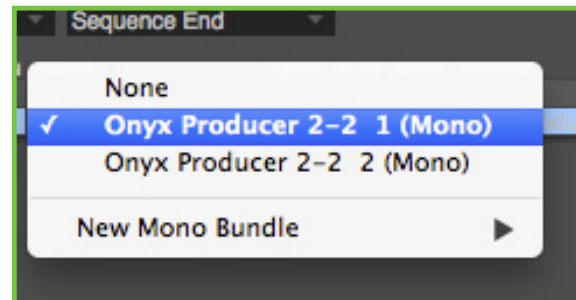
Create a new Digital Performer project. Go to File and click New.



Create a new track. Go to Project and Add Track then click Mono Audio Track.



Then on the new Mono Audio Track we want the Input set to Onyx Producer 2-2 1 (Mono).



Also, we will want the audio output of the new Mono Audio Track set to Onyx Producer 2-2 1-2 (Stereo).



Now your Onyx Producer 2-2 is configured for Digital Performer.



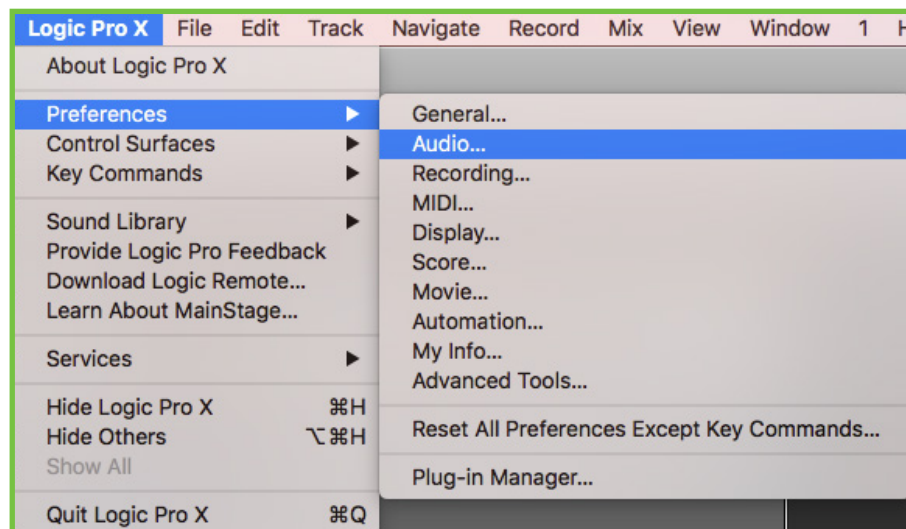
Onyx Producer 2-2 DAW Setup Guide

Logic Pro X Setup

Open Logic Pro X



Open Audio Preferences-To find Audio Preferences Window you will want to click Logic Pro X in the top left of your screen and go to Preferences and click Audio.



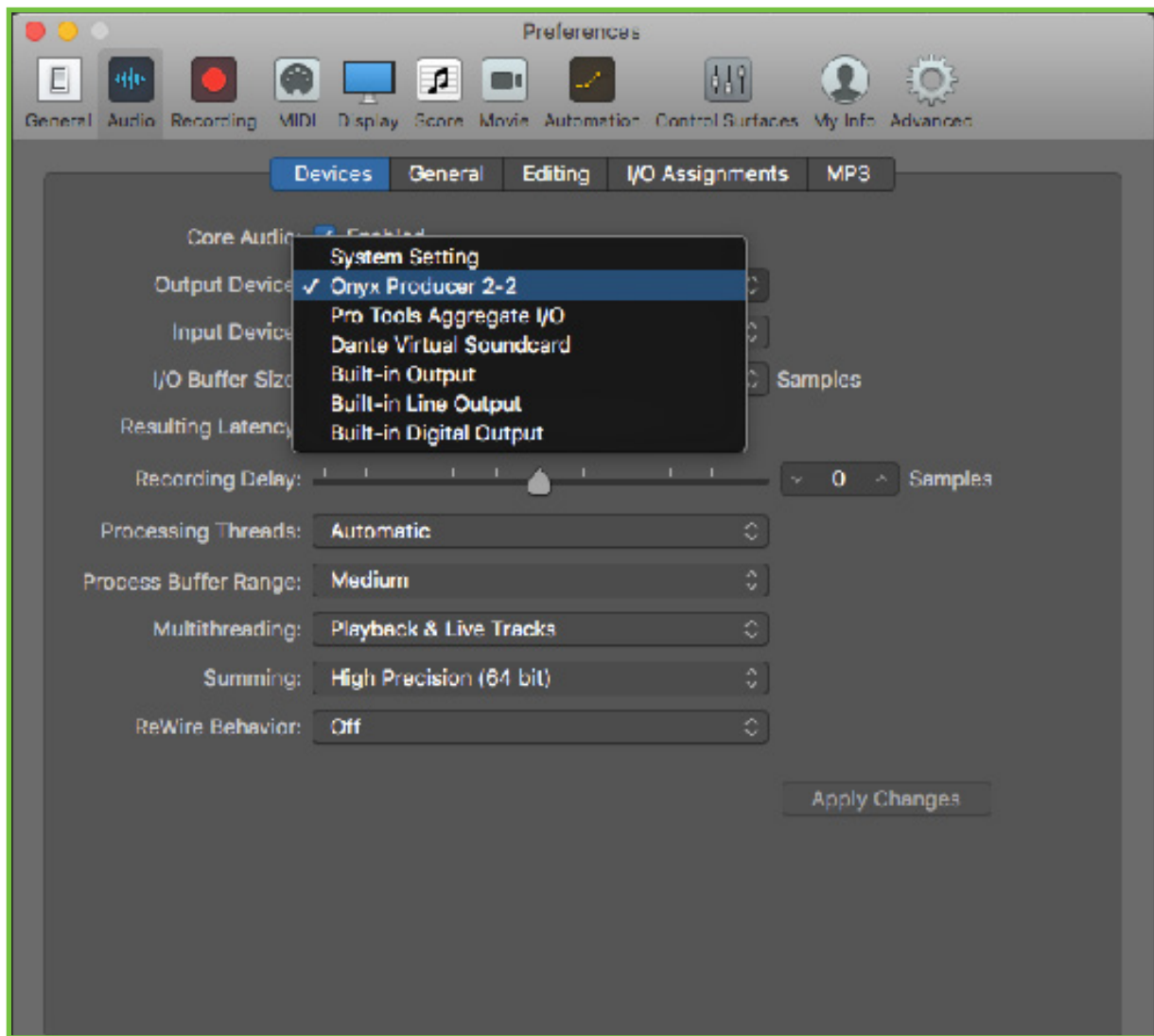
For more information check out our Technical Support Library



Onyx Producer 2-2 DAW Setup Guide

Logic Setup (cont.)

Configure The Input And Output Device - Once you are in the Audio Preferences window on the Devices tab you will want to set the Onyx Producer 2-2 to both your Input and Output hardware device.



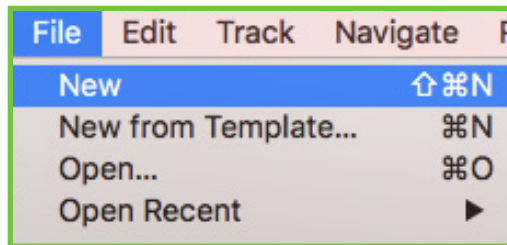
For more information check out our [Technical Support Library](#)



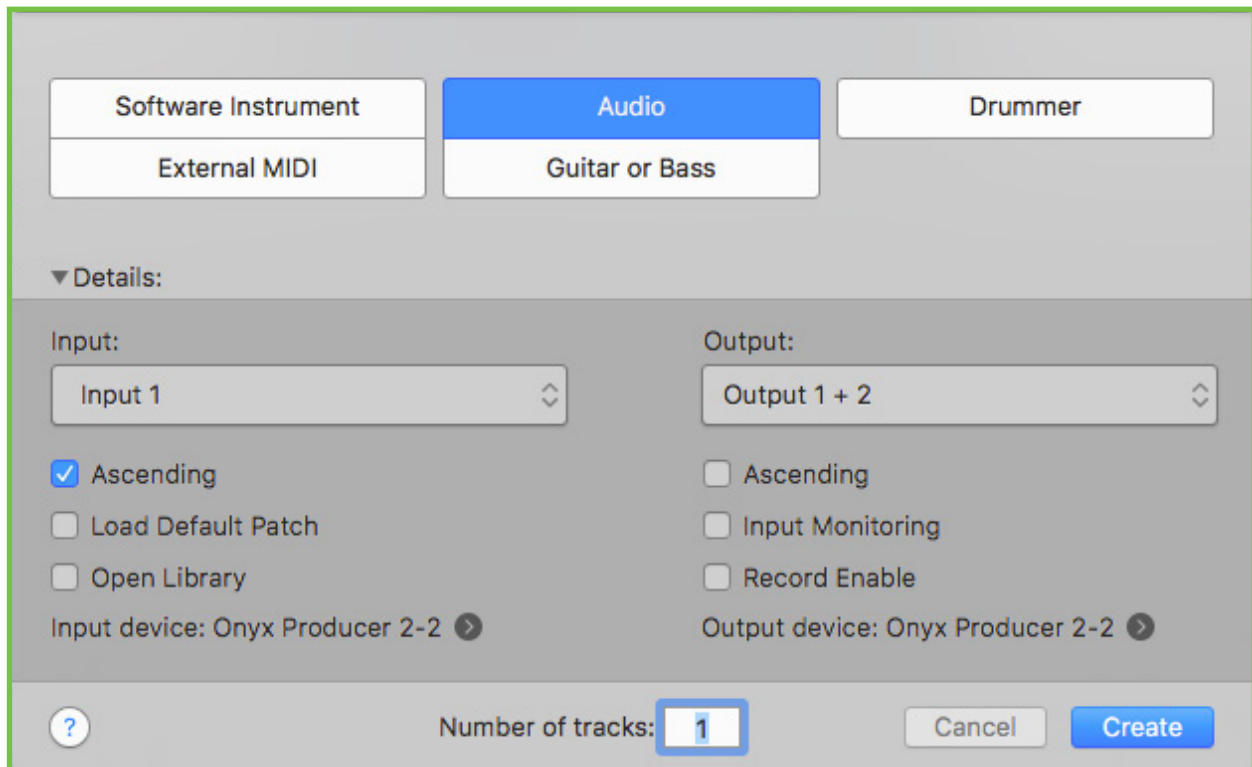
Onyx Producer 2-2 DAW Setup Guide

Example: Setting Up One Mono Track With The Onyx Producer 2-2 Input And Output Paths

To Create a New Project. Click File>New



Create an Audio track. Make sure that the Input and output are set to the Onyx Producer 2-2. Click Create.





Onyx Producer 2-2 DAW Setup Guide

If connecting a microphone to channel one of the Onyx Producer 2-2 you will want the input of that channel set to Input 1.



Typically the standard output you will want to use for a stereo output of your DAW would be Output 1-2.





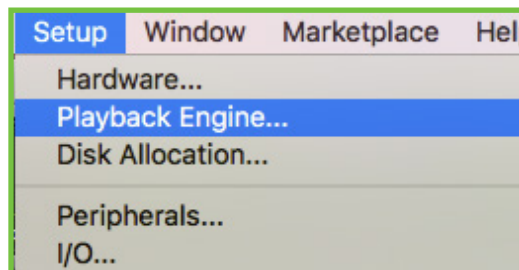
Onyx Producer 2-2 DAW Setup Guide

Pro Tools Setup

Open Pro Tools



Open the Playback Engine Window - To find the Playback Engine Window you will want to go to Setup and click Playback Engine.



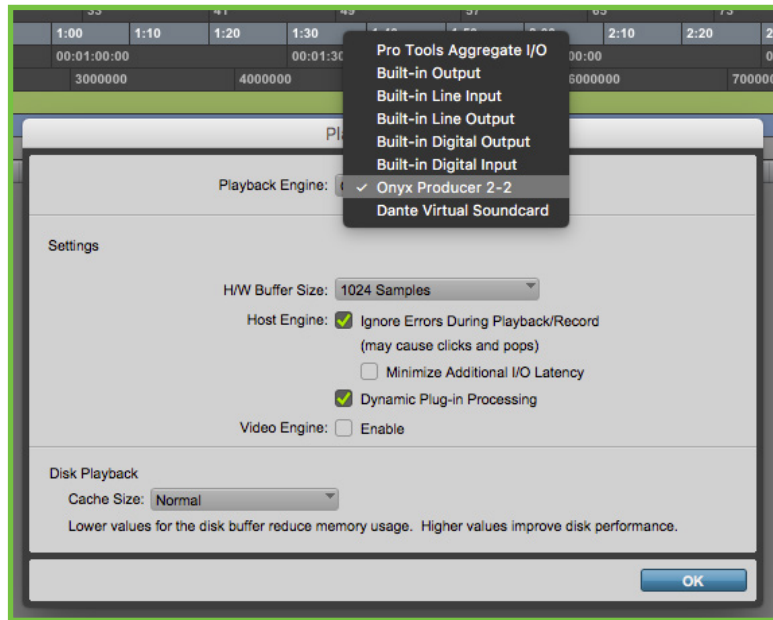


Onyx Producer 2-2 DAW Setup Guide

Pro Tools Setup (cont.)

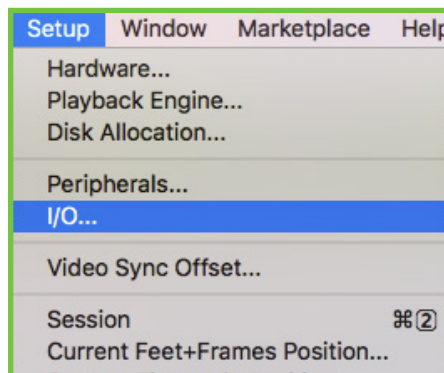
Configure the Playback Engine

Change the Playback Engine to Onyx Producer 2-2.
Click Ok.



Open the I/O Setup Window

To get to the I/O Setup Window, go to Setup and then click I/O.



For more information check out our Technical Support Library

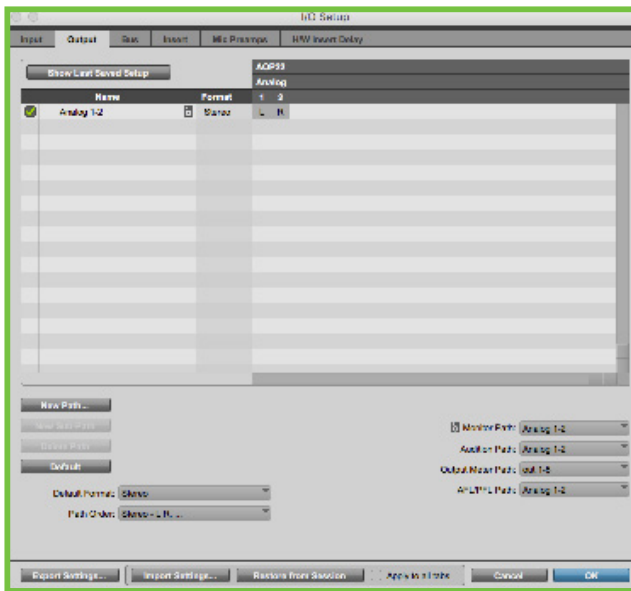


Onyx Producer 2-2 DAW Setup Guide

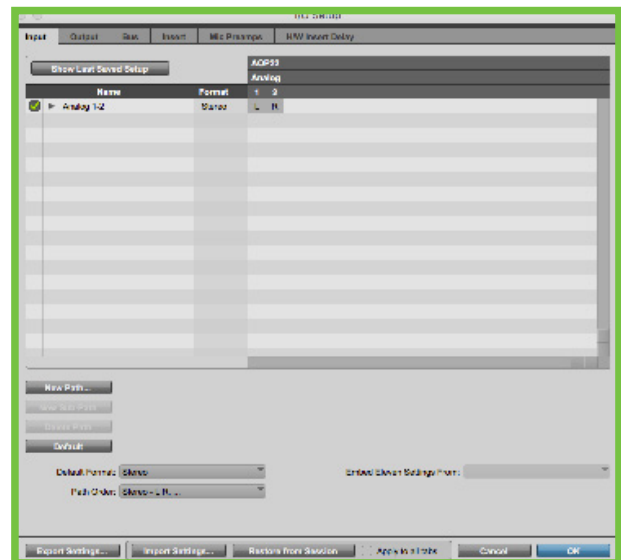
Pro Tools Setup (cont.)

Configure Playback Engine

1. Once you are in the I/O Setup window you will want to highlight all of routing paths on the output tab.
2. Then delete the current output routing paths.
3. After the output paths are deleted you will want to click the default button.
4. Then repeat these same steps for the input tab.
5. Then click Ok.



Here is what it should look like after clicking the default button on the input routing tab.



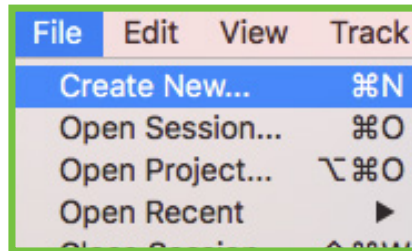
For more information check out our [Technical Support Library](#)



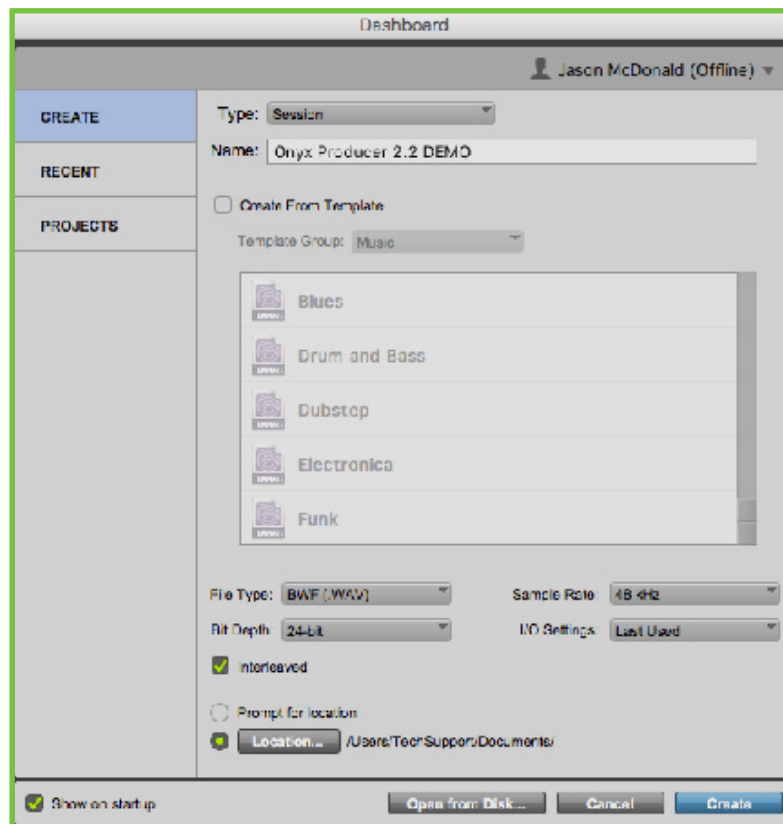
Onyx Producer 2-2 DAW Setup Guide

Example: Setting Up One Mono Track With The Onyx Producer 2-2 Input And Output Paths

Go to File and click New Session.



Create a Blank Session.
Click Ok.

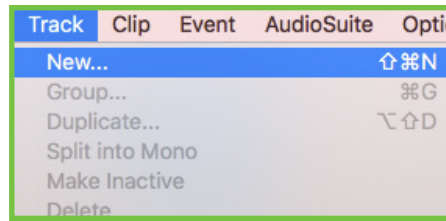




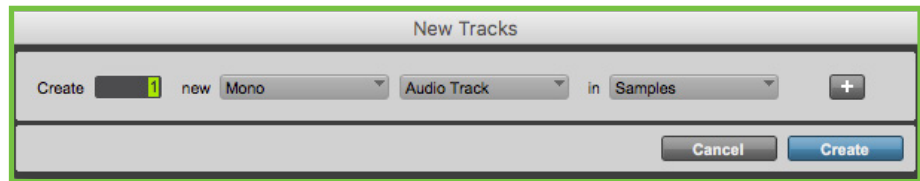
Onyx Producer 2-2 DAW Setup Guide

Pro Tools Setup (cont.)

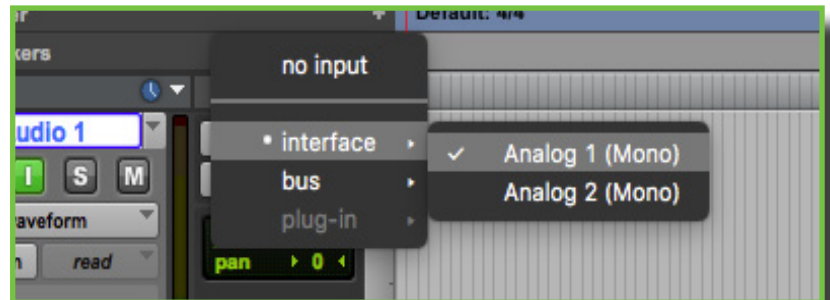
Create a new track. Go to Track and click New.



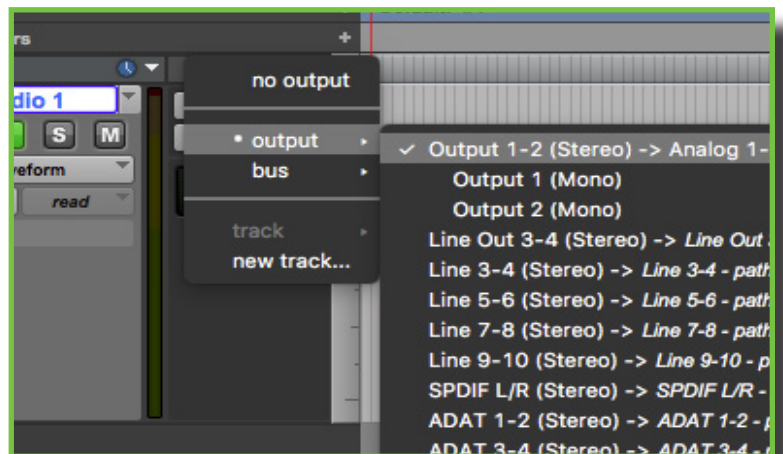
Make one Mono Channel.
Click Create.



If your microphone is plugged into Channel 1 you will want to set the input for your track to Analog 1 (Mono). Go to interface and click Analog 1 (Mono).



Typically the standard output you will want to use for your DAW is Output 1-2. Go to output and click Output 1-2 (Stereo)



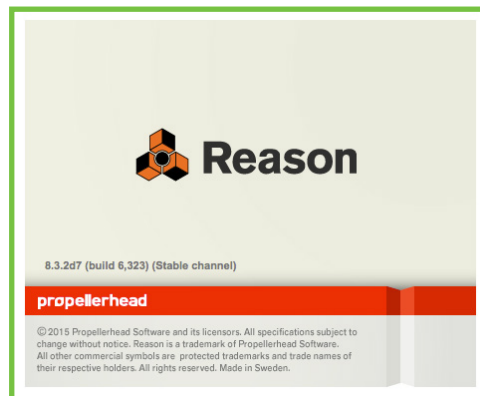
For more information check out our Technical Support Library



Onyx Producer 2-2 DAW Setup Guide

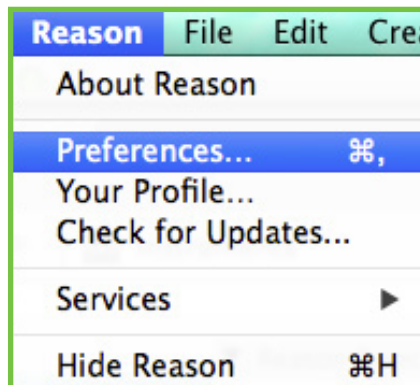
Reason Setup

Open Reason



Open Preferences

To find the Reason Preferences Window you will want to click Reason in the top left corner of your screen and then click Preferences. (The menu steps will be slightly different on a windows computer)





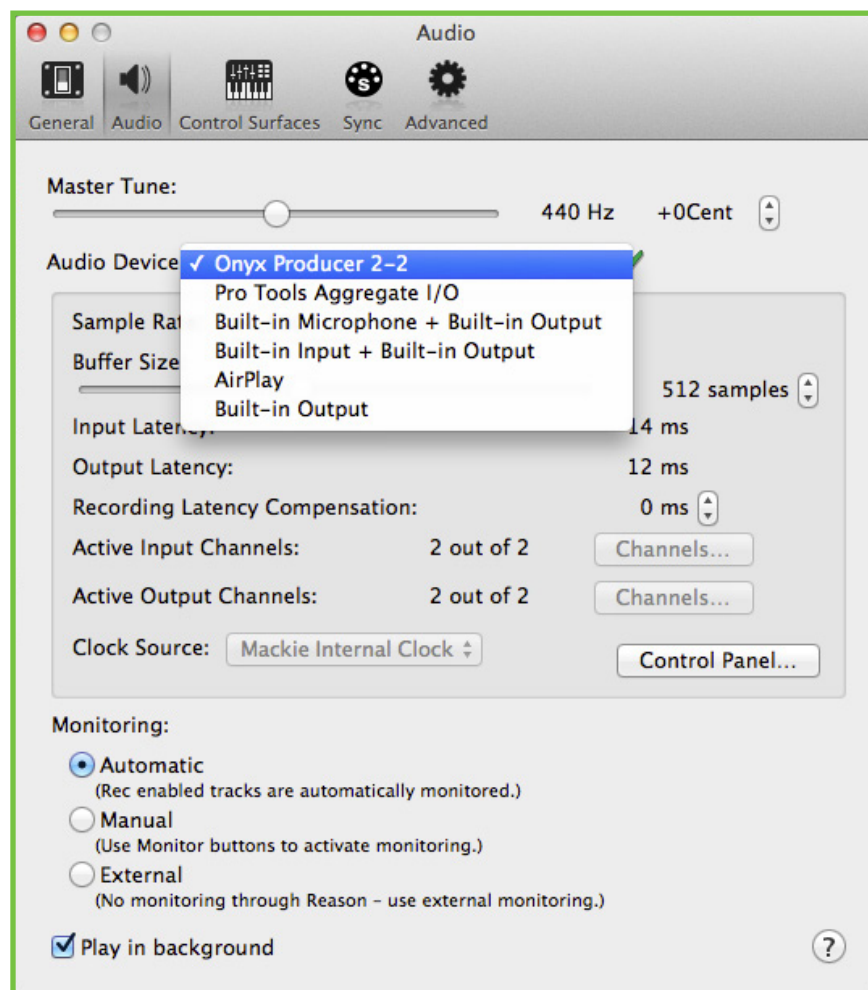
Onyx Producer 2-2 DAW Setup Guide

Reason Setup (cont.)

Configure The Audio Device

Click on the Audio Tab.

Select Audio Device as Onyx Producer 2-2.



For more information check out our [Technical Support Library](#)



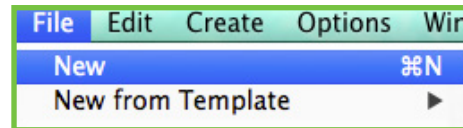
Onyx Producer 2-2 DAW Setup Guide

Reason Setup (cont.)

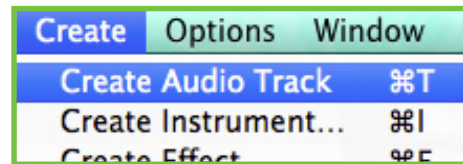
Example: Setting Up One Mono Track With The Onyx Producer 2-2 Input And Output Paths

Create a new Reason project.

Create a new Project.



Create a new track.



If connecting a microphone to channel one of the Onyx Producer 2-2 you will want the input of that channel set to Onyx Producer 2-2 Input 1.



Typically the standard output you will want to use for a stereo output of your DAW would be Output 1-2. Have the Audio Track routed to the Master Section and then the Master Section needs to be routed to the channel 1-2 outputs.



Now your Onyx Producer 2-2 is configured for Reason.

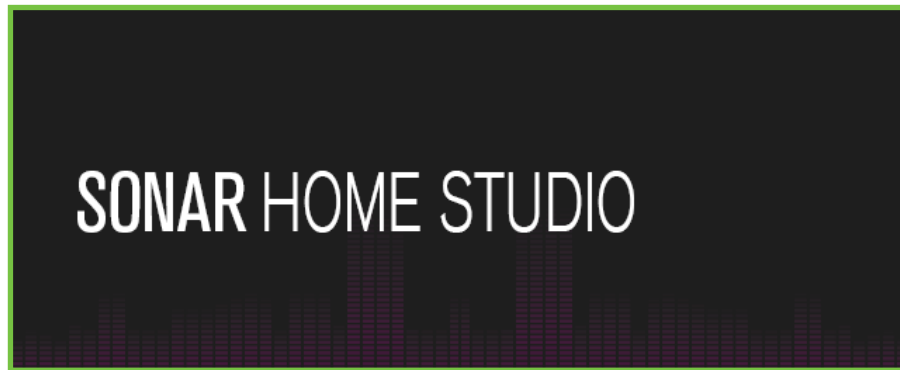
For more information check out our Technical Support Library



Onyx Producer 2-2 DAW Setup Guide

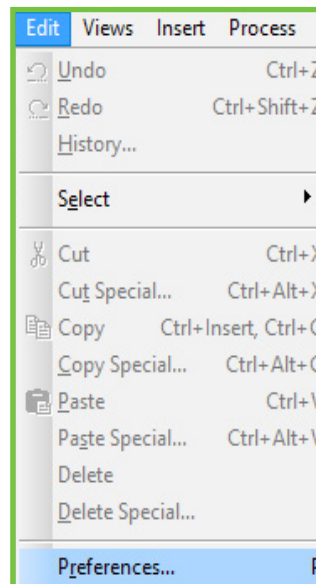
Sonar Setup

Open Sonar



Open The Sonar Preferences Window

To find the Sonar Preferences window you will want to go to Edit and click Preferences.



For more information check out our Technical Support Library



Onyx Producer 2-2 DAW Setup Guide

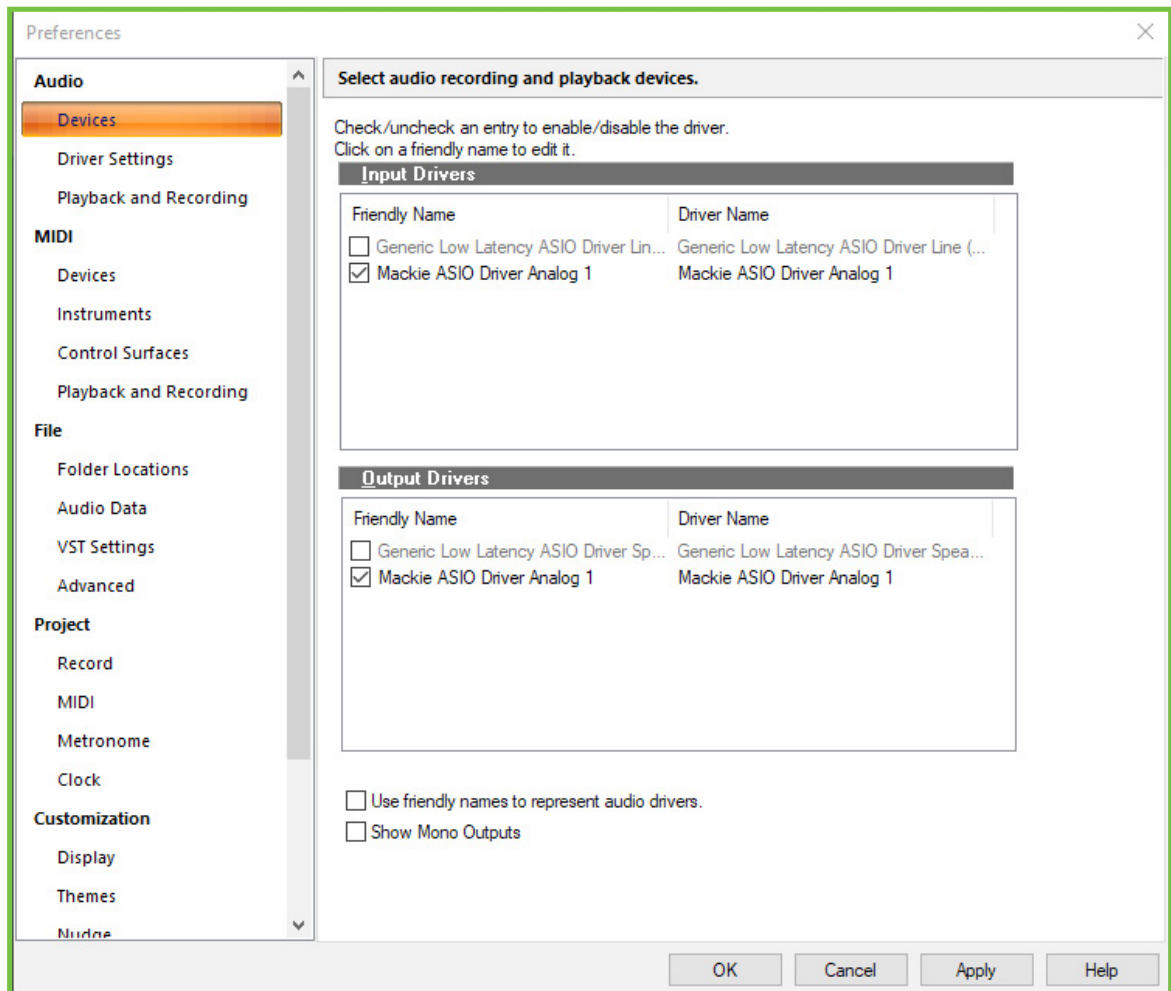
Configure Audio Devices

In the Preferences window under Audio you will want to click Devices.

For both the Input and Output Drivers you will want to have all of the I/O paths selected for the Mackie ASIO Driver Analog I.

If the Mackie ASIO Driver Input and Output paths are grayed out you will want to make sure that there is not another device selected such as AIS04ALL or your internal PC's sound card.

Click Apply





Onyx Producer 2-2 DAW Setup Guide

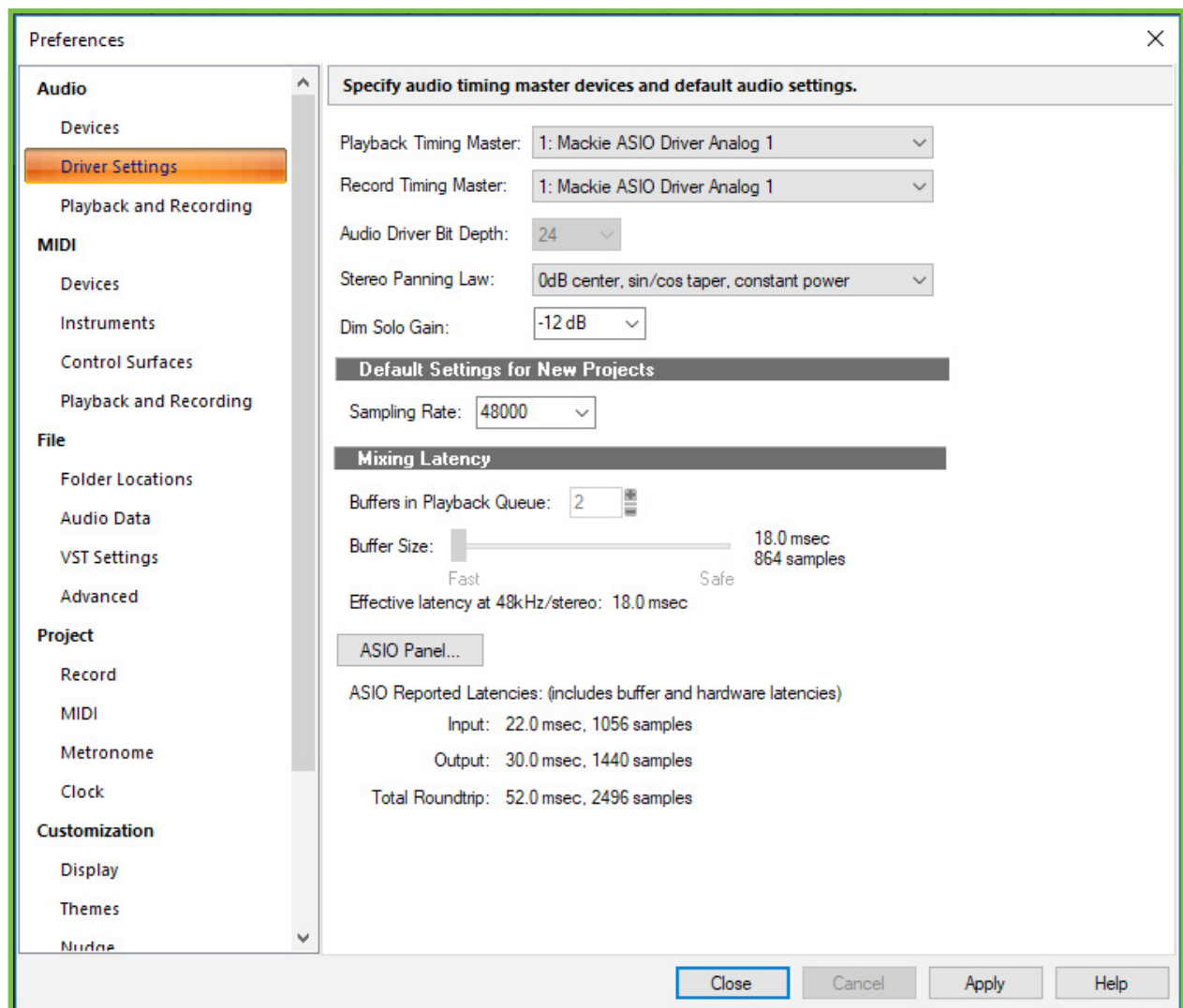
Sonar Setup (cont.)

Driver Settings

Click the **Driver Settings** tab.

Check to make sure that both the **Playback Timing Master** and **Record Timing Master** are set to **Mackie ASIO Driver Analog 1**.

Click **Apply**



For more information check out our [Technical Support Library](#)



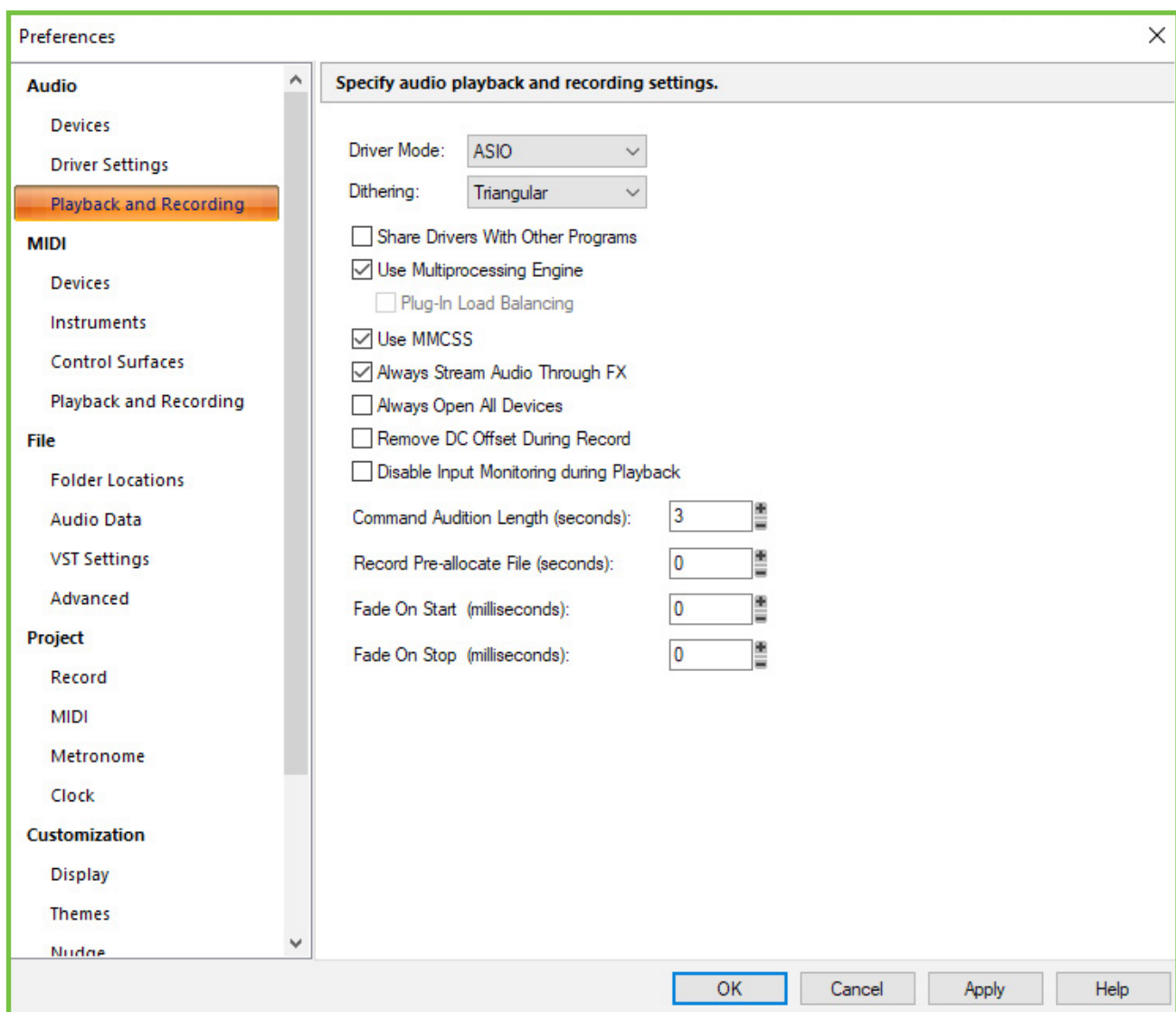
Onyx Producer 2-2 DAW Setup Guide

Playback And Recording

Click the Playback and Recording tab.

Check to make sure that the Driver mode is set to ASIO.

Click Apply then click Close.

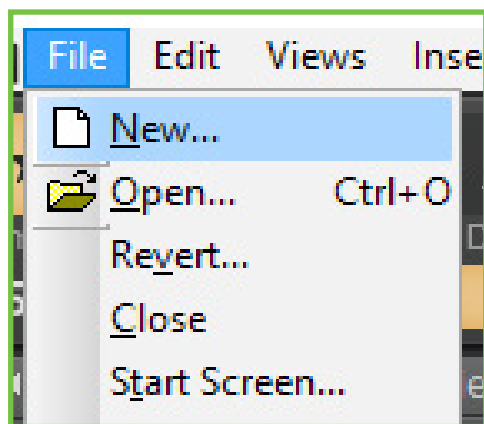




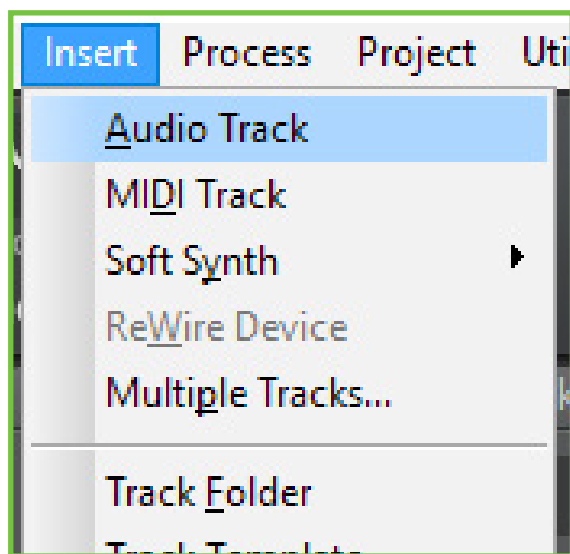
Onyx Producer 2-2 DAW Setup Guide

Example: Setting up one mono track with the Onyx Producer 2-2 input and output paths

Create a new Sonar project. Go File and click New.



Create a new audio track. Go to Insert and click Audio Track.

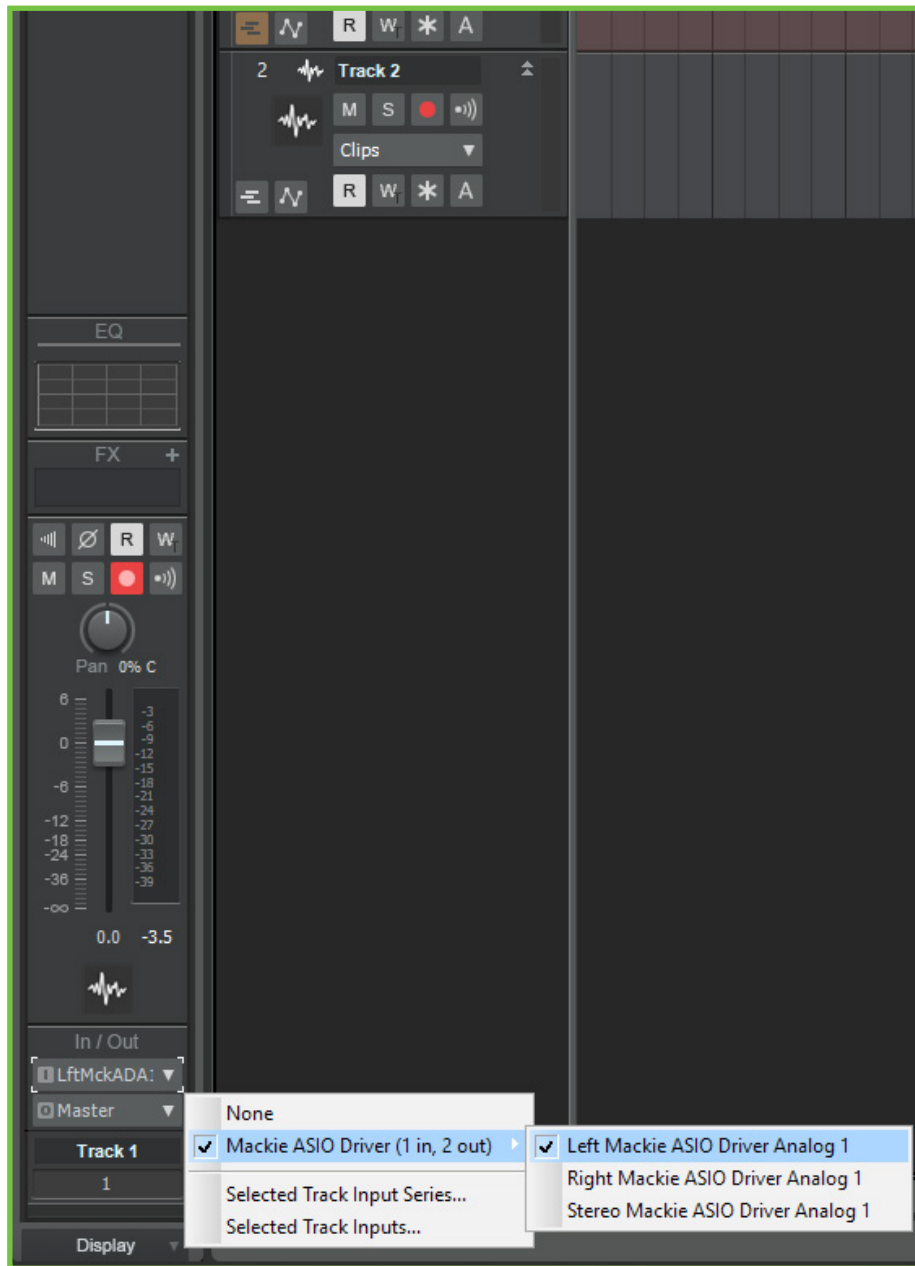




Onyx Producer 2-2 DAW Setup Guide

Sonar Setup (cont.)

Once you have your audio track created you will want to set the input for the Onyx Producer 2-2. For this example we will want the input set to Left Mackie ASIO Driver Analog 1. (Have the track set to Mono- interleaved mode.)



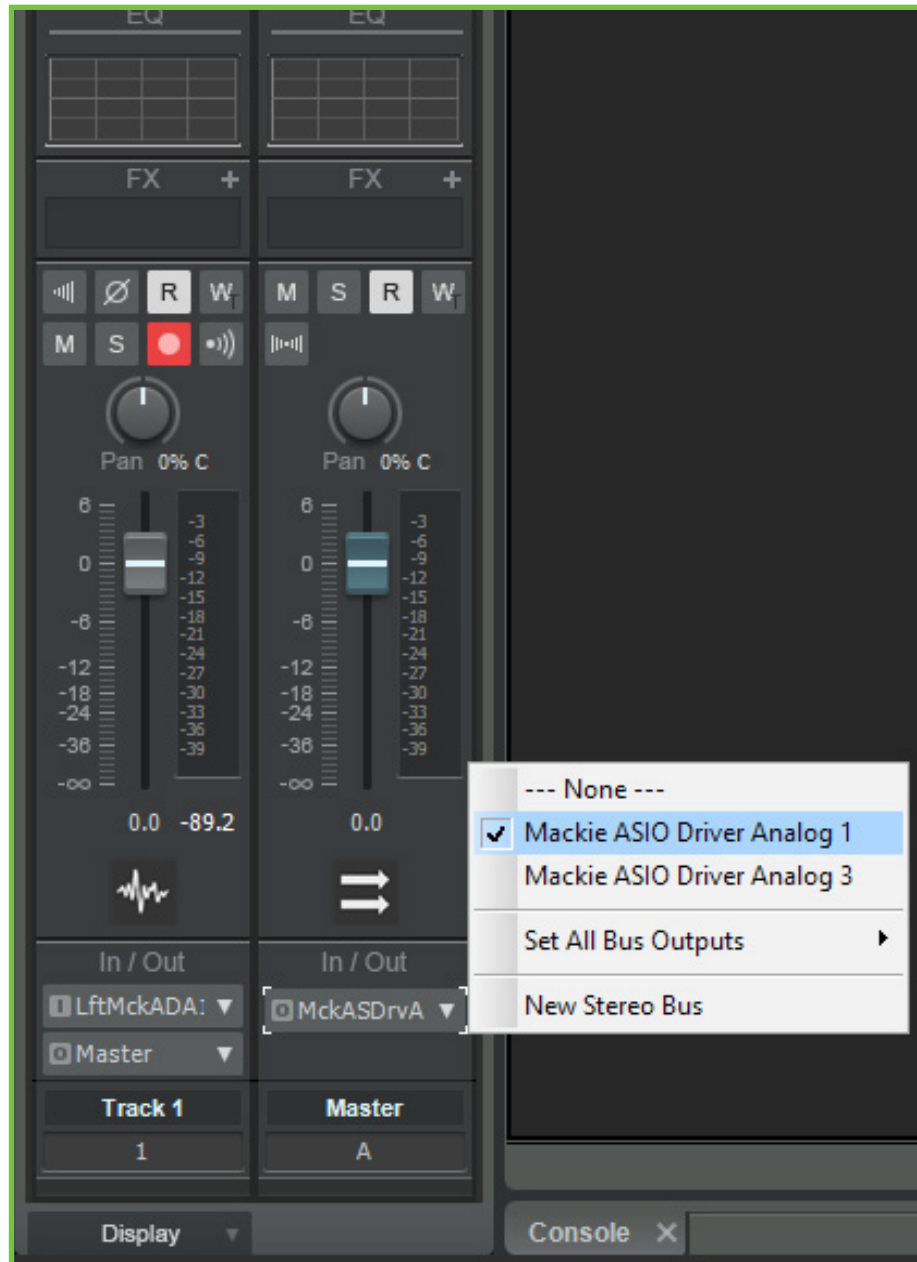
For more information check out our [Technical Support Library](#)



Onyx Producer 2-2 DAW Setup Guide

Sonar Setup (cont.)

Have the output of that track set to master. The master needs to be set to Mackie ASIO Driver Analog 1.



Now your Onyx Producer 2-2 is configured for Sonar.

For more information check out our [Technical Support Library](#)



Onyx Producer 2-2 DAW Setup Guide

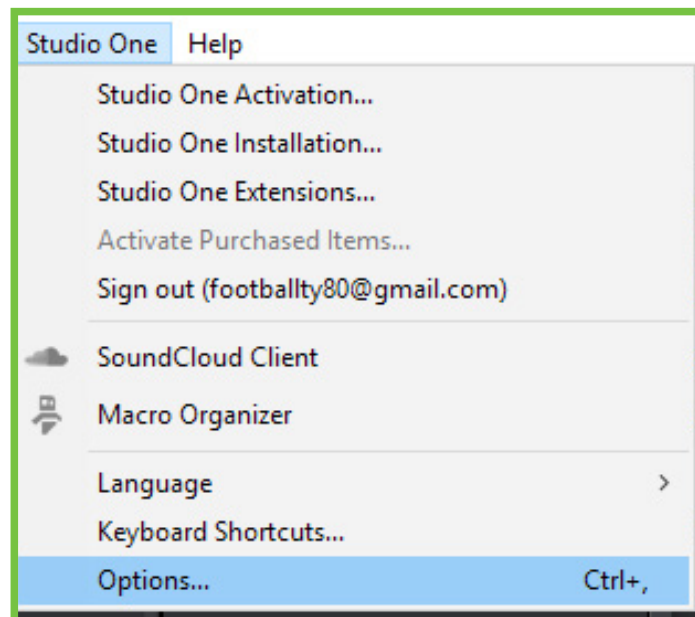
Studio One Setup

Open Studio One



Open The Studio One Options Window

To find the Studio One Preferences Window you will want to click Studio One on the top of your screen and then click Options. On an Apple computer, go to Studio One then click Preferences. (The menu steps will be slightly different on an Apple computer.)





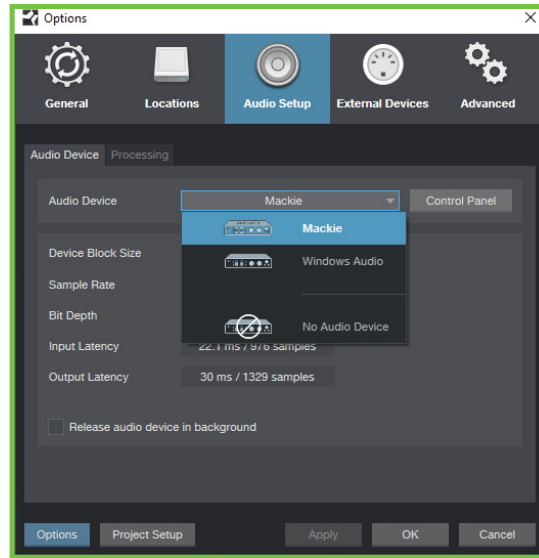
Onyx Producer 2-2 DAW Setup Guide

Studio One Setup (cont.)

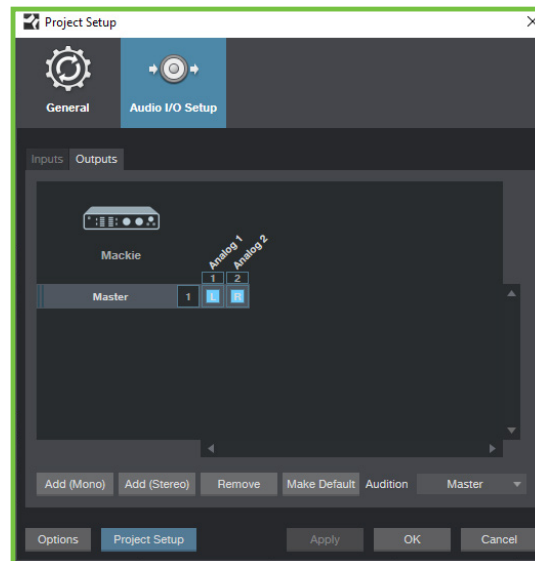
Configure Audio Setup

Once you are in the Options window you will want to click on the speaker labeled Audio Setup.

The Audio Device needs to be set to the Onyx Producer 2-2 (Mackie).



Click on Project Setup in the bottom left corner. Then click on Audio I/O Setup. Make sure that you are seeing Mackie in the Inputs and Outputs tabs. Also make sure that Analog 1 and Analog 2 are selected in the Outputs tab. (See image below)



For more information check out our [Technical Support Library](#)

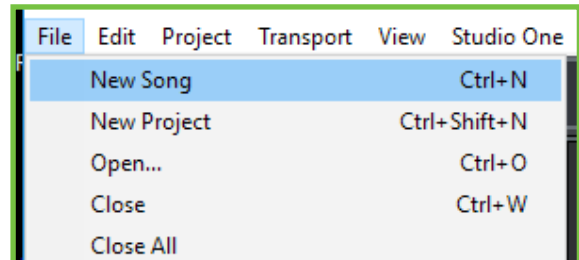


Onyx Producer 2-2 DAW Setup Guide

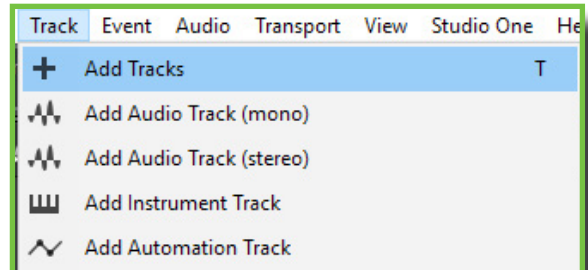
Studio One Setup (cont.)

Example: Setting up one mono track with the Onyx Producer 2-2 input and output paths

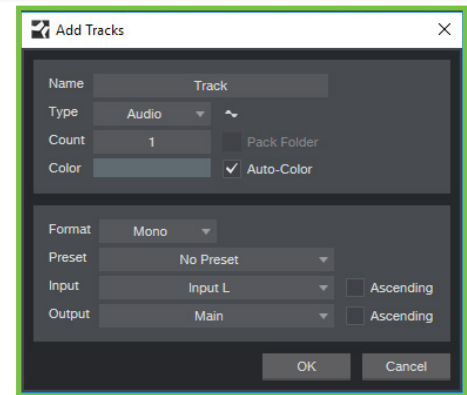
Create a new song in Studio One. Go to File and click New Song.



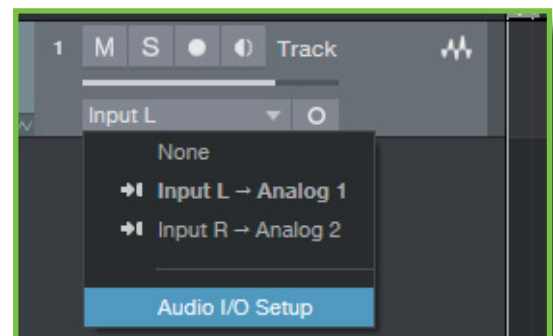
Create a new track. Go to Track and click Add Tracks.



Configure your new track. For this example we will want one mono track.



Now we need to make sure that the Audio I/O setup for the Song Settings is setup correctly. On the input section of the audio track that we just created click the input section and then click Audio I/O Setup.

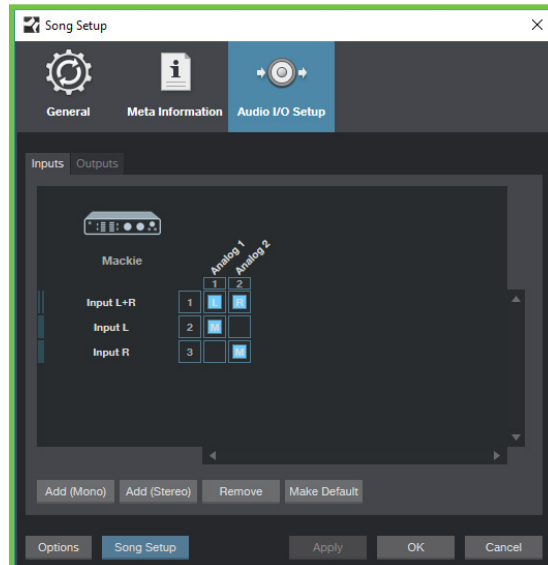




Onyx Producer 2-2 DAW Setup Guide

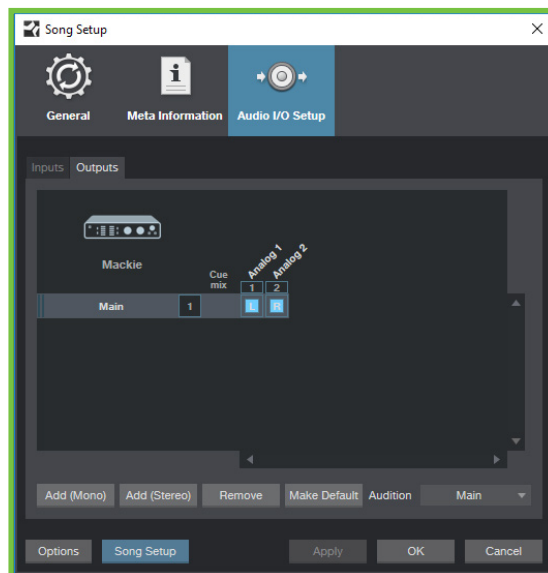
Studio One Setup (cont.)

In Song Setup under the Audio I/O Setup we want to first setup all the input paths for the Onyx Producer 2-2. Typically with the Onyx Producer 2-2 on the input section we would want to create 2 mono input paths.



Next we will want to click the output section. In the Output section we typically would want to have the Main Out set to the Onyx Producer 2-2 Output 1-2.

Now Click Apply and Ok.

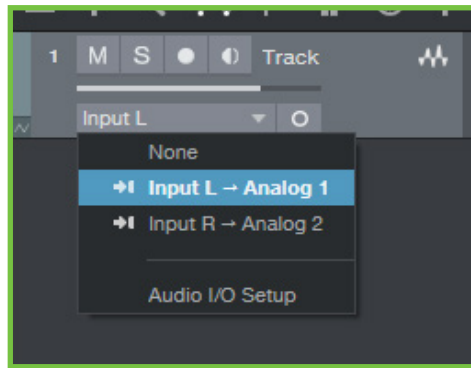




Onyx Producer 2-2 DAW Setup Guide

Studio One Setup (cont.)

On our newly created track we will want to set the input of that track to Analog I.



Also on our audio track we will want to set the output to the main mix output. Now your Onyx Producer 2-2 is configured for Studio One.



For more information check out our Technical Support Library



Onyx Producer 2-2 DAW Setup Guide

Tracktion Setup

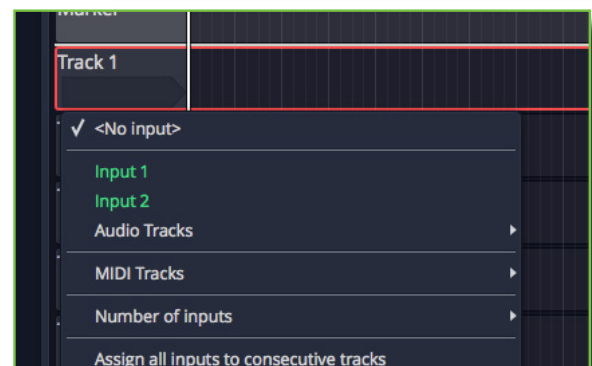
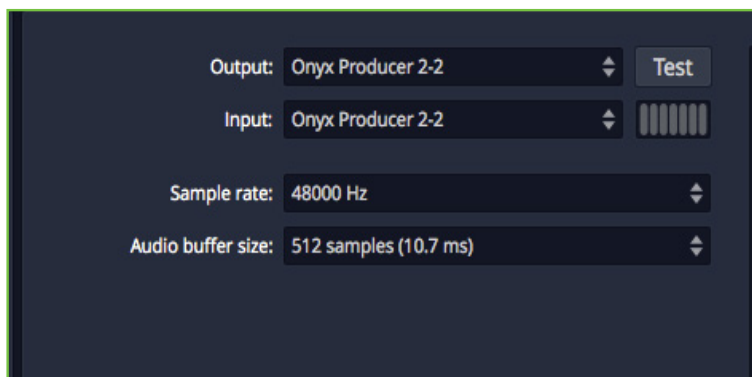
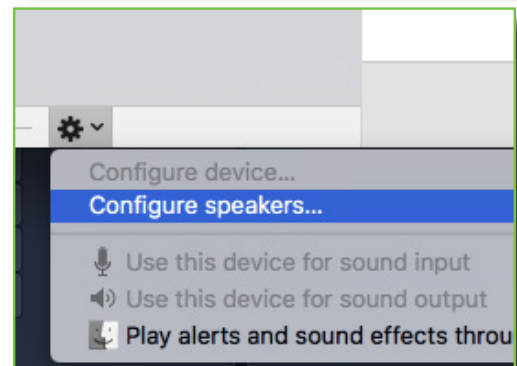
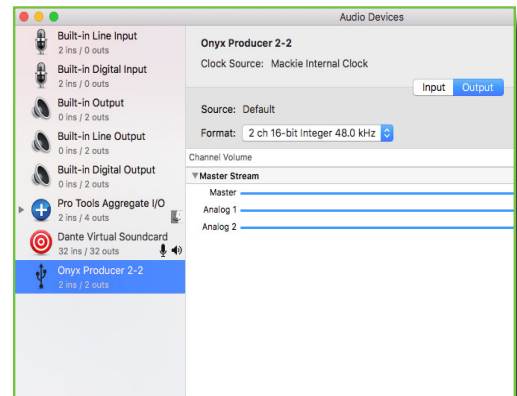
To begin, simply point your web browser to www.tracktion.com/authorize and follow the onscreen instructions. Once you've registered your license, you'll be able to join the Tracktion community, have access to the very latest downloads and online support tools.

Note: You will need the included code to authorize your TRACKTION 7 software. A high-speed Internet connection is required for downloading the application. See the product release notes after registering for detailed installation instructions and minimum system requirements.

Installing On OSX (Apple Computers)

No special drivers are needed to run the Onyx Producer 2-2 with a Mac.

1. Once you have downloaded and installed your Tracktion software, connect a USB cable between the USB port on the Onyx Producer 2-2 and an available USB port on your Mac.
2. Open up the Audio Midi Setup app. To find it, press Command + Spacebar to open Spotlight, then type 'Audio Midi Setup'.
3. Start the Tracktion 7 software. Under the settings tab you can set the Onyx Producer 2-2 as your default input and output device and enable or disable your I/O.
4. Start a new project. Create your tracks and assign your inputs as needed.



For more information check out our Technical Support Library



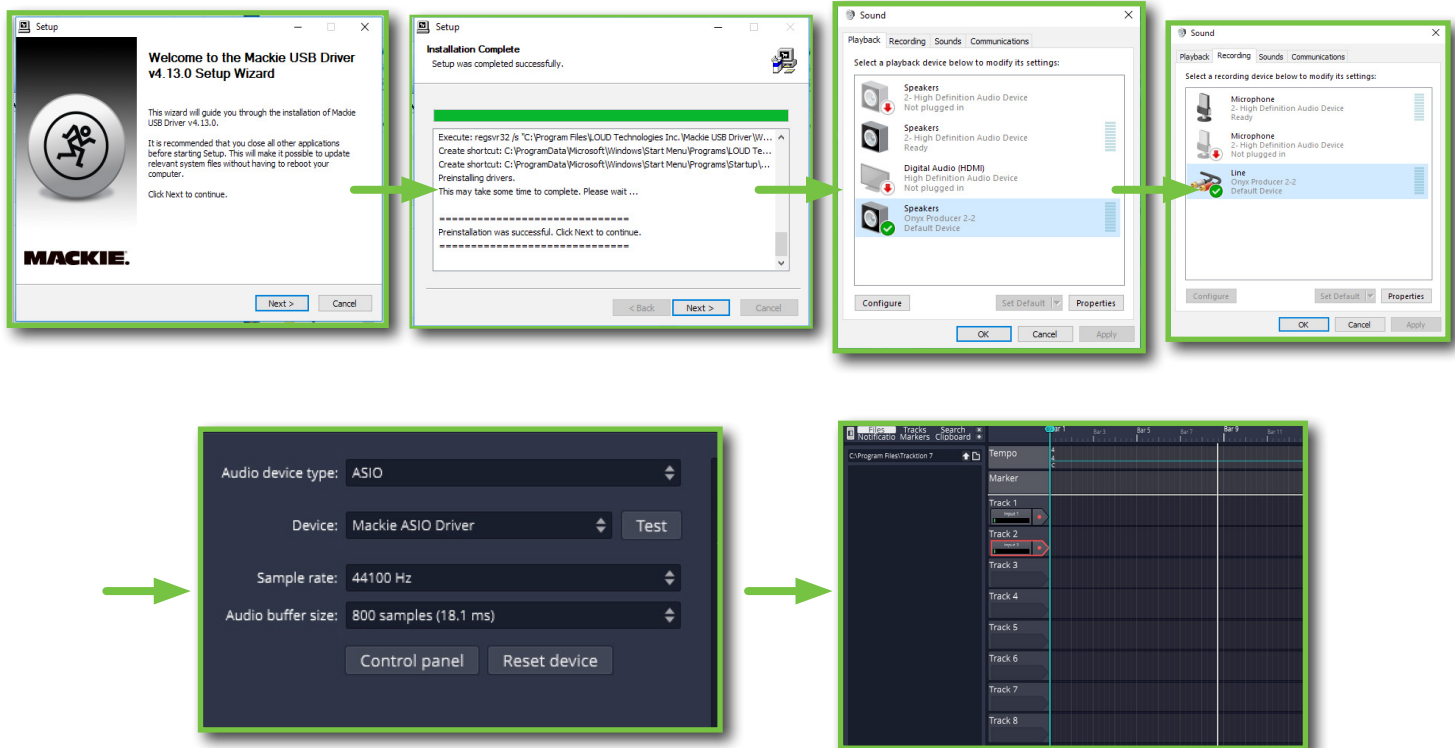
Onyx Producer 2-2 DAW Setup Guide

Tracktion Setup (cont.)

Installing On Windows

1. Download the Onyx Producer 2-2 Windows driver from www.mackie.com.
2. Extract the .zip file and navigate to the 'MackieSetup' file. Double click this file and follow the prompts to install the drivers to your computer.
3. Once the drivers are installed, connect a USB cable between the USB port on the Onyx Producer 2-2 and an available USB port on your PC.
4. From the Windows Start Menu, go to 'Control Panel' and select 'Sound'. Under the 'Playback' tab select the Onyx Producer 2-2 as the default device. Do the same under the 'Recording' tab. Click 'OK'.
5. Start the Tracktion 7 software. Under the settings tab, select 'ASIO' as the Audio Device Type and 'Mackie ASIO Driver' as the device.
6. Start a new project. Create your tracks and assign your inputs as needed.

For additional Tracktion support, visit www.tracktion.com.



For more information check out our [Technical Support Library](#)