

ASSEMBLY VERSION TABLE	
-00	SMALL BOX 120V VERSION
-01	SMALL BOX 230V VERSION
-02	BIG BOX 120V VERSION
-03	BIG BOX 230V VERSION
-04	FS 120V VERSION
-05	FS 240V VERSION
-06	SRM1801/TH18S 120V
-07	SRM1801/TH18S 230V

© 2007-2011 LOUD TECHNOLOGIES INC.
ALL RIGHTS RESERVED
THE INFORMATION CONTAINED HEREIN
IS PROPRIETARY AND CONFIDENTIAL
PROPERTY OF LOUD TECHNOLOGIES INC.

HARDWARE

* DENOTES PARTS NOT USED
ON -04 THRU -07 ASSY'S.

- SCR1

0024371

SCR2

0024371

SCR3

0024371

SCR4

0024371

SCR5

0024371

SCR6

0024371

SCR7

0024371

SCR8

0024371

★ SCR9

0024371

★ SCR10

0024371
- SCR11

0026672

SCR12

0026672

SCR13

0026672
- SCR14

701-016-00

SCR15

701-016-00

SCR16

701-016-00

SCR17

701-016-00

SCR18

701-016-00

SCR19

701-016-00
- WSH1

0026697

WSH2

0026697

WSH3

0026697

WSH4

0026697

WSH5

0026697

WSH6

0026697

★ WSH7

0021419

★ WSH8

0021419
- ★ INS1

0021424

★ INS4

0021424
- INS2

0025433

INS3

0025433
- E1

0008320-04

E2

0008320-04

E3

0008320-04

E4

0008320-04

E5

0008320-04

E6

0008320-04

E7

0008320-04
- Z2

2034504
- PG

Not used on box mixers.

APPROVALS

DATE

DRAWN: RJ

6/25/2008

CHECKED:

NP ENG:

MATERIAL:

MFG:

MFG ENG:

ISSUED:

LOUD Technologies Inc.

16220 WOOD-RED RD NE WOODINVILLE, WA 98072

SCHEMATIC, POWER SUPPLY
MAIN SUPPLY

SIZE D

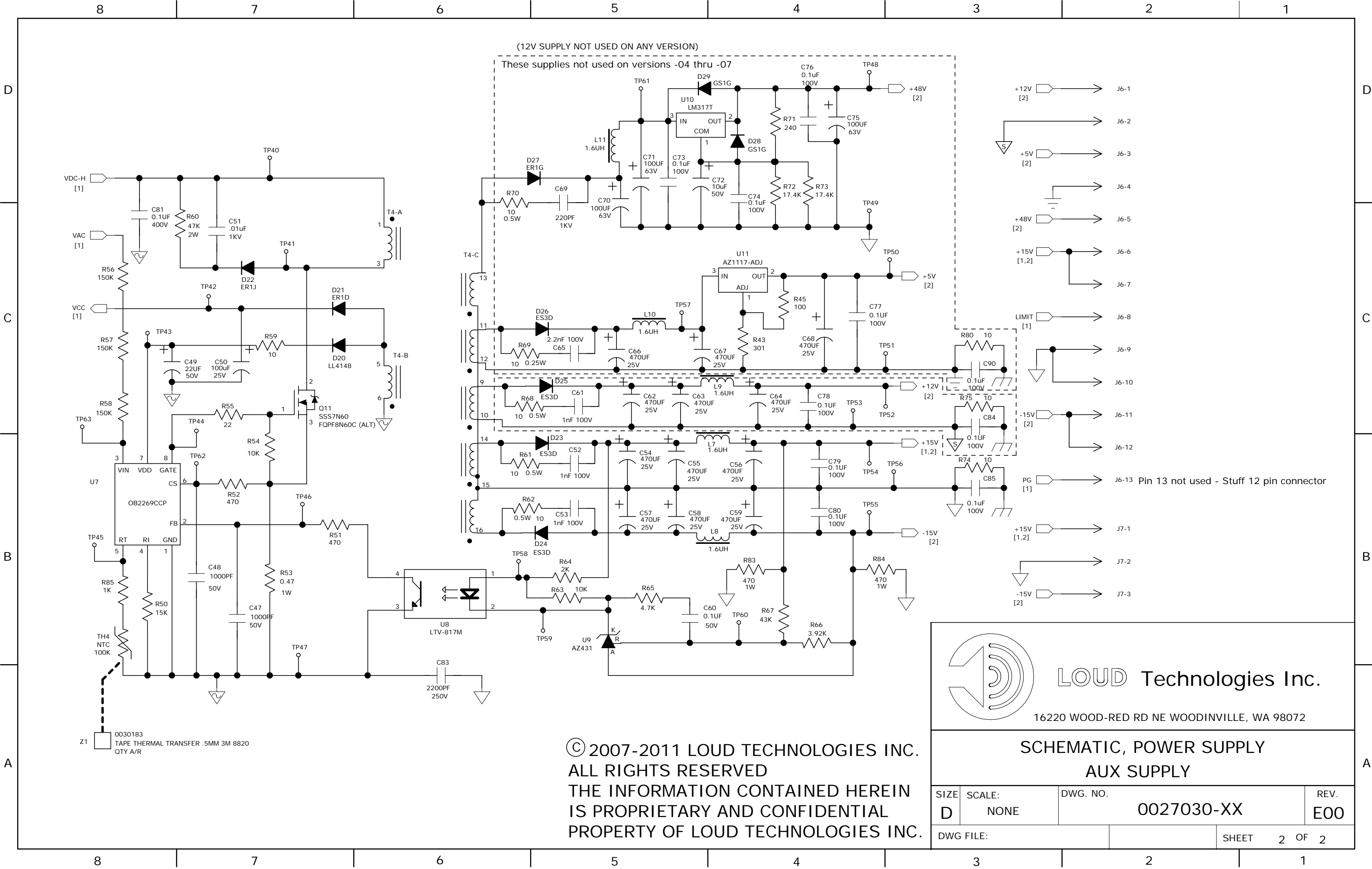
SCALE: NONE

DWG. NO. 0027030-XX

REV. E00

DWG FILE:

SHEET 1 OF 2



© 2007-2011 LOUD TECHNOLOGIES INC.
ALL RIGHTS RESERVED
THE INFORMATION CONTAINED HEREIN
IS PROPRIETARY AND CONFIDENTIAL
PROPERTY OF LOUD TECHNOLOGIES INC.