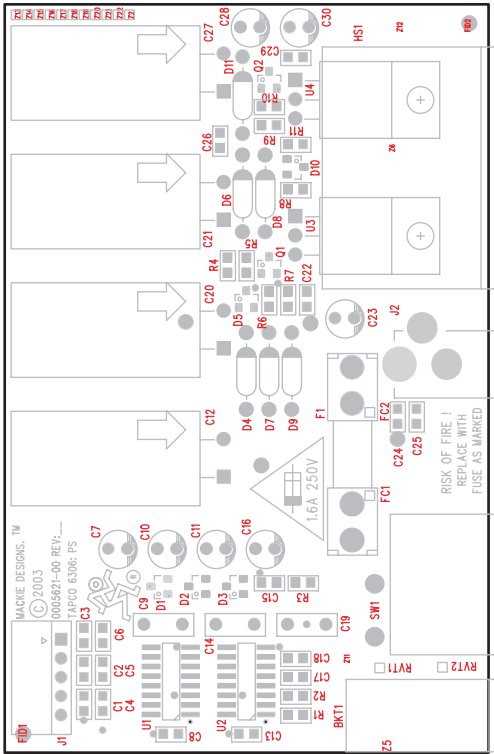
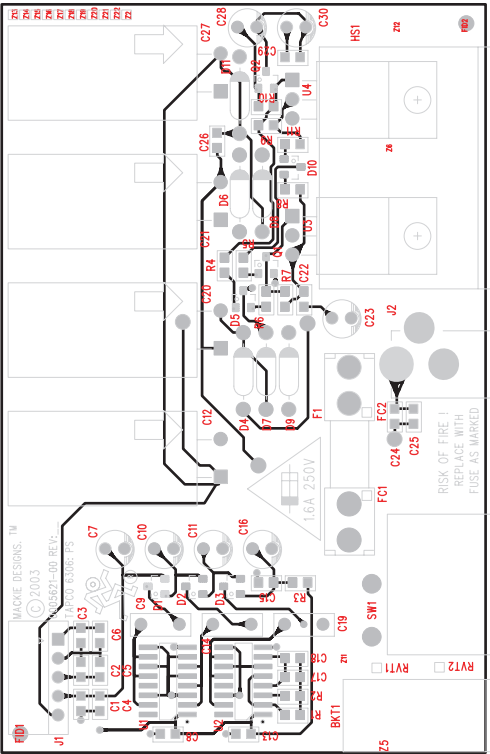


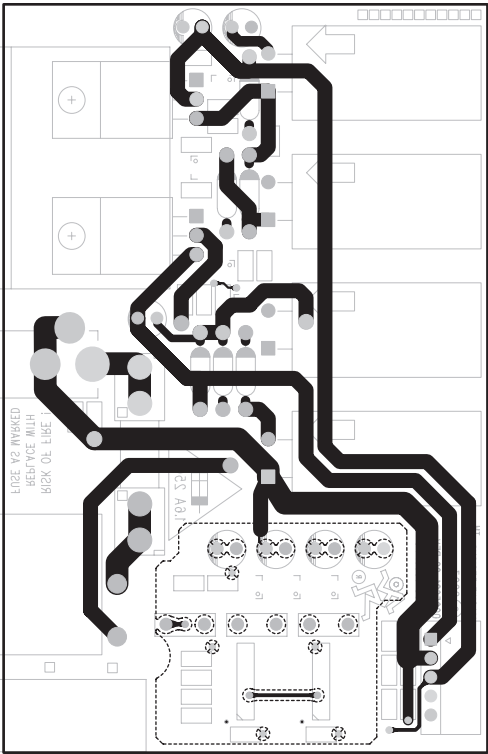
ECO#	REV:	DESCRIPTION	REV. BY:	APP. BY:	DATE
6118	A00	RELEASE TO PRODUCTION AT Rev. A00	MFP		03/12/03
6126	B00	CORRECT MOUNTING HOLE DIAMETER	MFP		03/13/03
6146	B01	ADD LABEL AND MISC HARDWARE	MFP		03/20/03
6172	C00	REMOVE Z1	KR		03/31/03



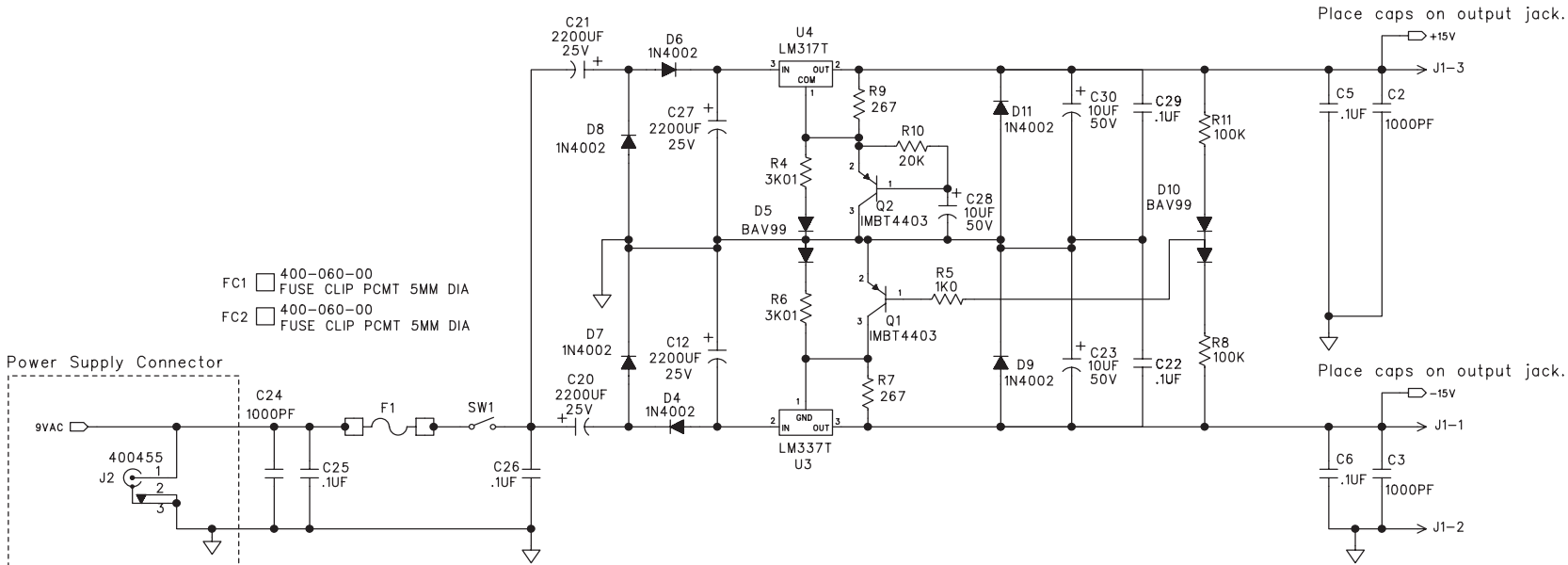
TOP SURFACE



TOP SURFACE WITH TRACES



BOTTOM SURFACE



- FC1 400-060-00 FUSE CLIP PCMT 5MM DIA
FC2 400-060-00 FUSE CLIP PCMT 5MM DIA

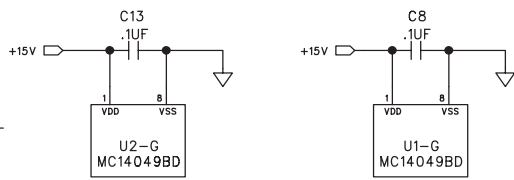
Power Supply Connector

- HS1 0005842 HEATSINK MIX POWER SUPPLY
Z2 0005620-00 PCB, TAPCO 6306: POWER SUPPLY 0006369
Z13 LBL BLANK 30X6mm BD P/N(AMS BD)
Z14 0006531 INSL WASHER,TO-220 0006531
Z15 0006531 INSL WASHER,TO-220 410-005-00
Z16 410-005-00 INSL SILPAD TO-220 410-005-00
Z17 410-005-00 INSL SILPAD TO-220

- Z18 700-012-00 MCH 4-40X3/8 PHP CLRZC
Z19 700-012-00 MCH 4-40X3/8 PHP CLRZC
Z20 705-005-00 NUT LOCK 4-40
Z21 705-005-00 NUT LOCK 4-40

- RVT1 712-021-01 RVT CL END .125X.062-.125
RVT2 712-021-01 RVT CL END .125X.062-.125
BKT1 712-020-00 BRKT ANG 6-32X.037THK STL
Z22 730-038-00 JET MELT 3M 3779-Q

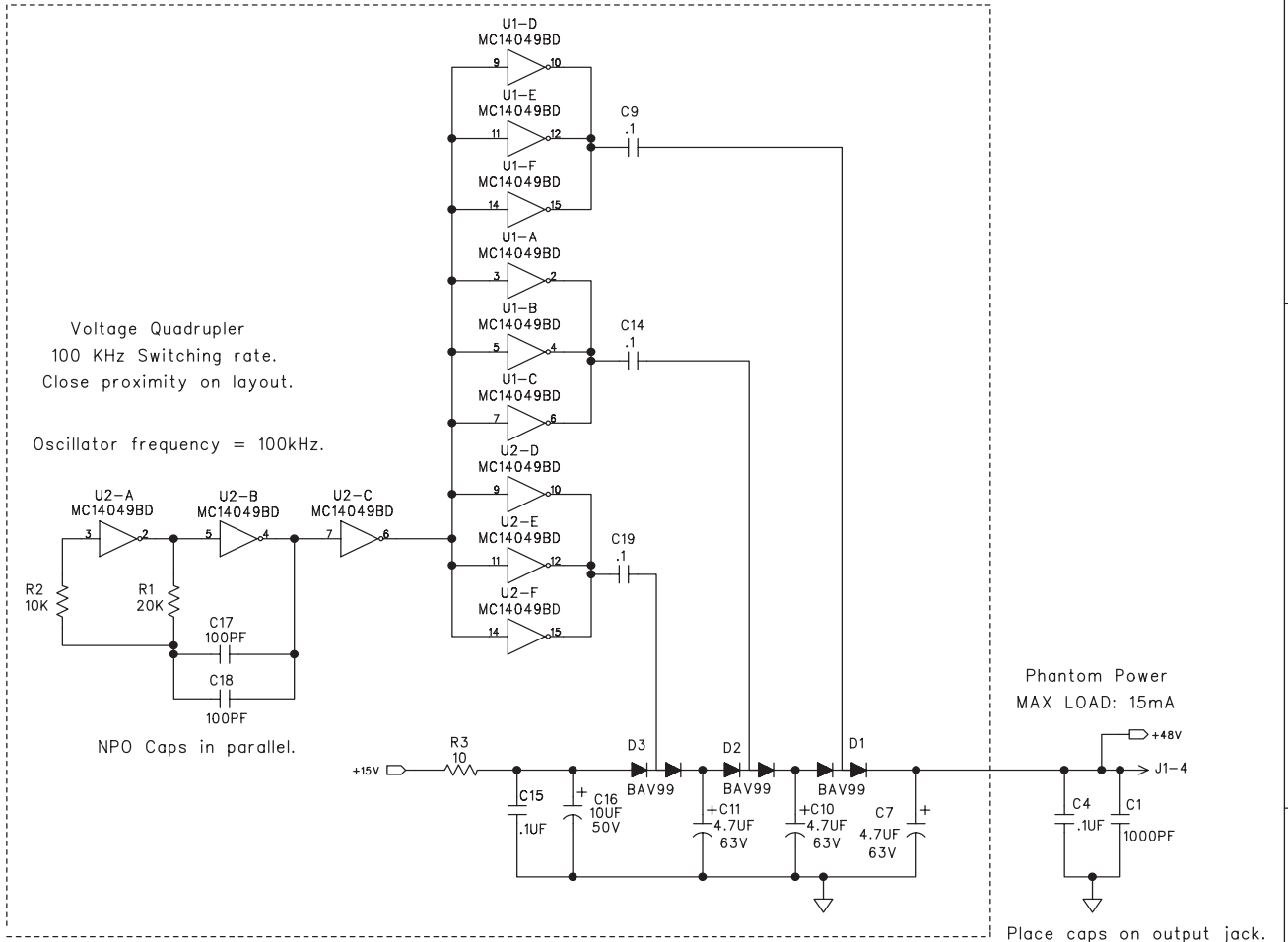
TIE TO GND "STAR" POINT
MTR_GND FROM MAIN BOARD



Voltage Quadrupler
100 KHz Switching rate.
Close proximity on layout.

Oscillator frequency = 100kHz.

NPO Caps in parallel.



Phantom Power
MAX LOAD: 15mA

Place caps on output jack.

APPROVALS	DATE
DRAWN: RR	11-21-02
CHECKED:	
NP ENG:	
MATERIAL:	
MFG:	
MFG ENG:	
ISSUED:	

MACKIE
Mackie Designs Inc. Woodinville, Wa.

Tapco 6306: Power Supply

©2003 MACKIE DESIGNS INC.
ALL RIGHTS RESERVED
THE INFORMATION CONTAINED HEREIN
IS PROPRIETARY AND CONFIDENTIAL
PROPERTY OF MACKIE DESIGNS INC.

SIZE	SCALE	DWG. NO.	REV.
D	NONE	SCH0005621	C00
DWG FILE:		SHEET 1 OF 1	