

Mackie Tech Support – Onyx Blackbird Standalone Preamp via ADAT Optical

This guide will take you through how to connect the Onyx Blackbird as a standalone preamp to another Onyx Blackbird via ADAT optical.

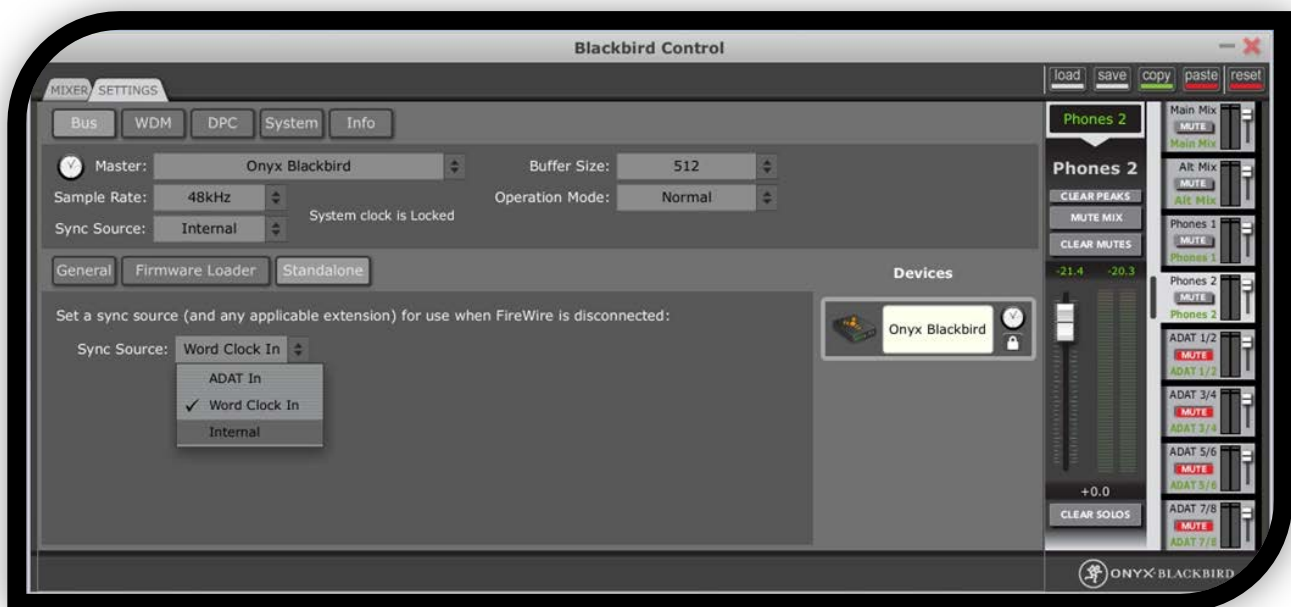
- You will require an ADAT optical cable (pictured below in figure A)



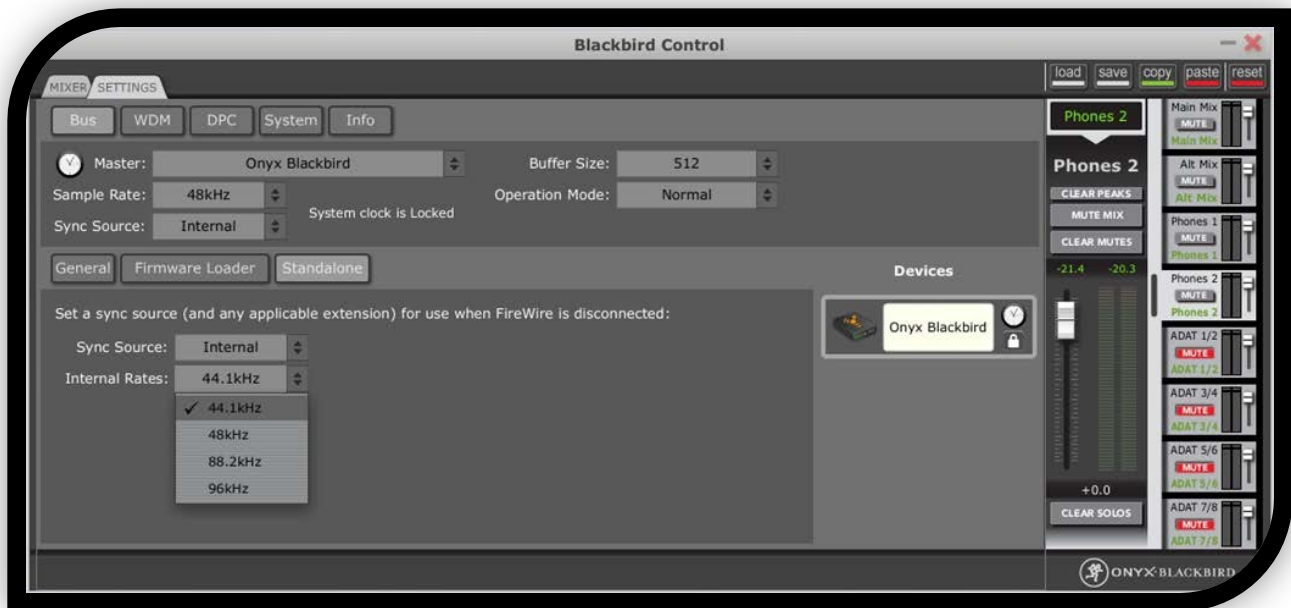
Fig. A

Connecting the Onyx Blackbird using ADAT optical

- First we will need to configure the control panel for the Onyx Blackbird that is going to be used as the standalone preamp. For the moment leave your main Onyx blackbird disconnected and powered off. Connect the Onyx blackbird you wish to use as a standalone preamp to your computer via firewire and power it on. This will allow us to access the control panel standalone settings
- Launch the Onyx Blackbird control panel and select the settings page. Once in the setting page select standalone. We will need to change the sync source from its default (Word-clock) setting to (Internal). This will allow your main Onyx blackbird to synchronize to the internal clock of the standalone Onyx Blackbird via ADAT optical.



Note: Once you select internal as your standalone sync source you will also want to select the sample rate you wish to work at.



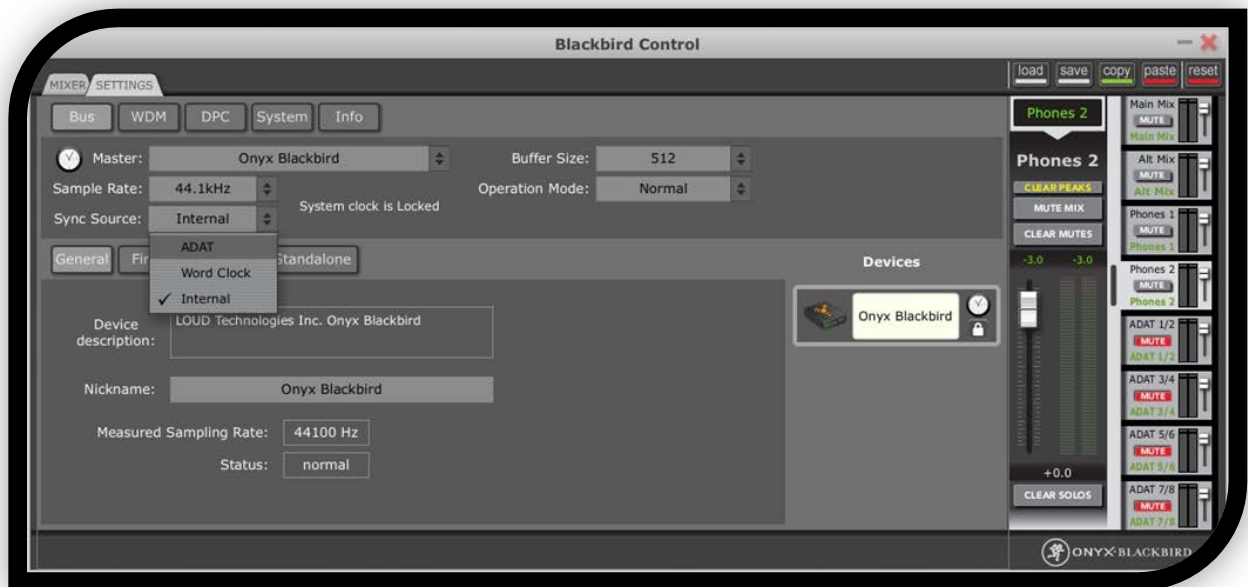
3. Now that we have setup the Onyx Blackbird control panel for your standalone unit we can disconnect the standalone unit and turn it off for the moment.
4. Now it is time to make the physical connection between your main Onyx Blackbird that is going to be connected to your computer via firewire and the Onyx Blackbird that is going to be used as a standalone preamp.
5. Take the ADAT optical cable and connect it from the ADAT output labeled (Out 1-8 44.1/48 KHz) of the standalone unit to the ADAT input of your main Onyx Blackbird labeled (In 1-8 44.1/48 KHz).



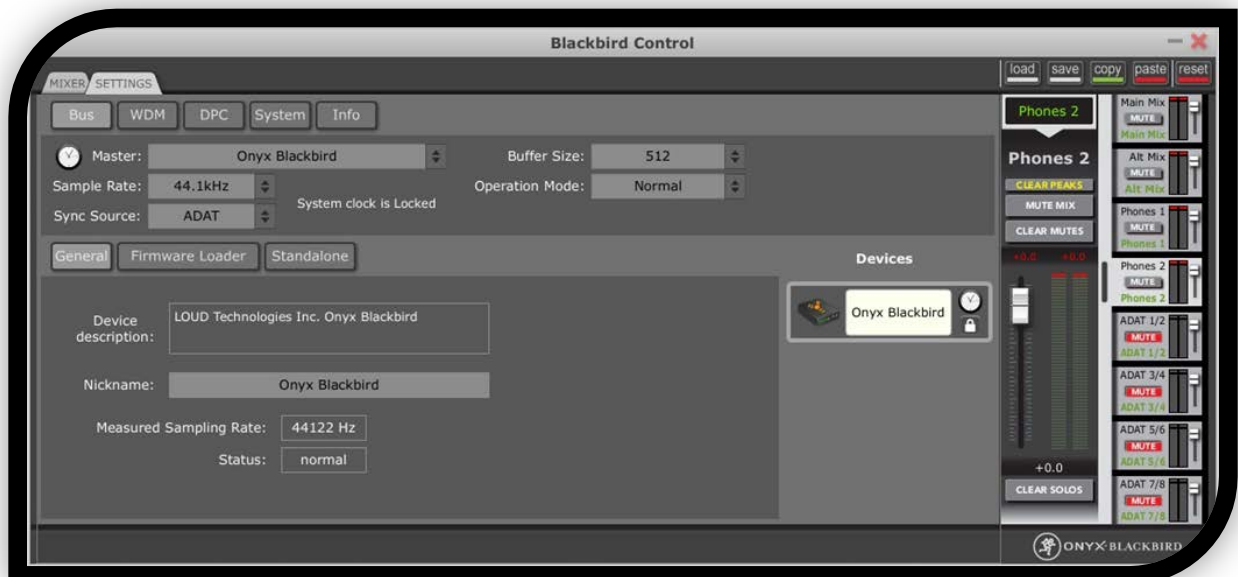
Note: If you wish to work at a sample rate of 88.2 or 96 KHz you will require two separate ADAT optical cables to transmit a full 8 channels of digital audio. This will also require you to use both ADAT optical ports on the Onyx Blackbird. Please refer to the Onyx Blackbird manual to learn more about how SMUX II works.

http://www.mackie.com/Products/onyxblackbird/pdf/Onyx_Blackbird_OM.pdf

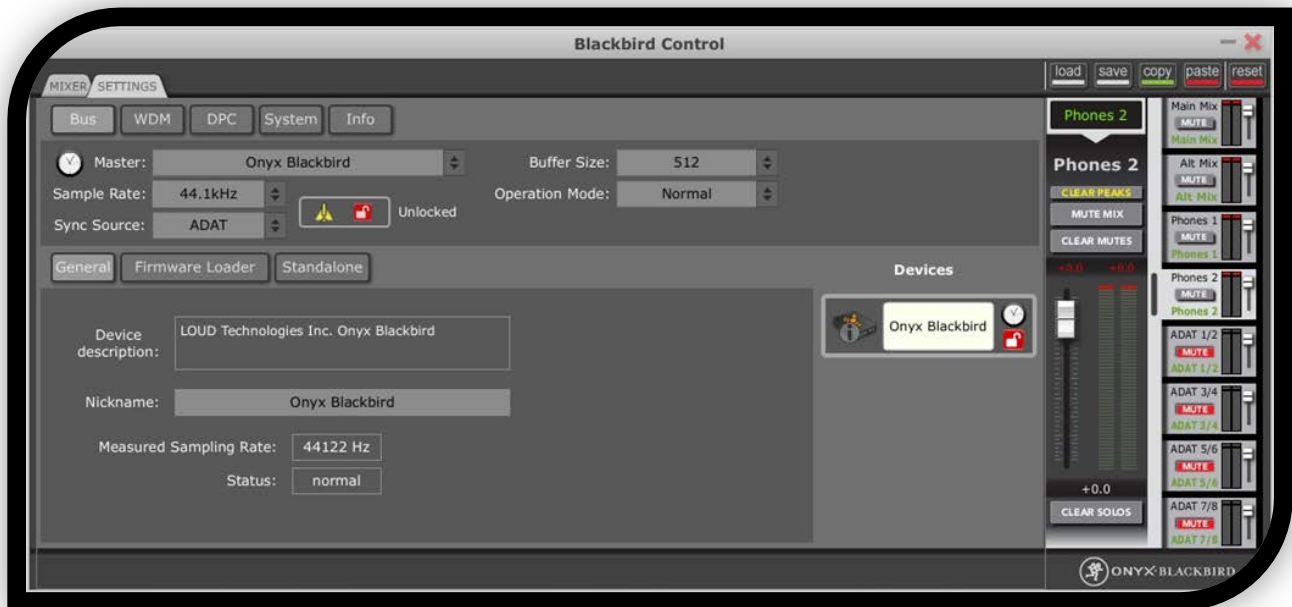
6. Connect your main Onyx Blackbird to your computer via firewire and power it on.
7. Power on the standalone Onyx Blackbird.
8. Once you have connected your main Onyx Blackbird launch the Onyx Blackbird control panel and go to the setting page.
9. In the setting page select ADAT as your sync source. You will need to change the sample rate to correspond with the sample rate you set for the standalone Onyx Blackbird.



10. Once you select ADAT as your sync source you should get an indication in the Blackbird control app that the system clock is locked as seen in the screen shot below.



11. If you receive an error message indication the system sync is (Unlocked) you need to review all previous steps to ensure all of your connections and Blackbird control panel settings are correct. If no error message is received you are ready to start recording.



Enjoy your Onyx Blackbird!

Contact Us

If you are still having a setup issue, please contact us via email or phone so we can trouble shoot your setup.

Email: techmail@loudtechinc.com

Phone: 800-258-6883 Ext. 1632

We are open Monday – Friday, 8AM-4PM PST

