

DWG. NO.		055-370-XX	SHT	1	REV:	B00	1	
ECO#	REV:	DESCRIPTION			REV. BY:	APP. BY:	DATE	
4583	A	PRODUCTION RELEASE.			JJI		10-19-01	
4667	B	REVISE RESISTOR AND CAPACITOR VALUES			CDJ		5-20-02	
5284		DELETE 2 706-106-00 FROM BOM.						
		INCORPORATE ASSEMBLY OPTION FOR						
		HR626-THX.						

D

D

C

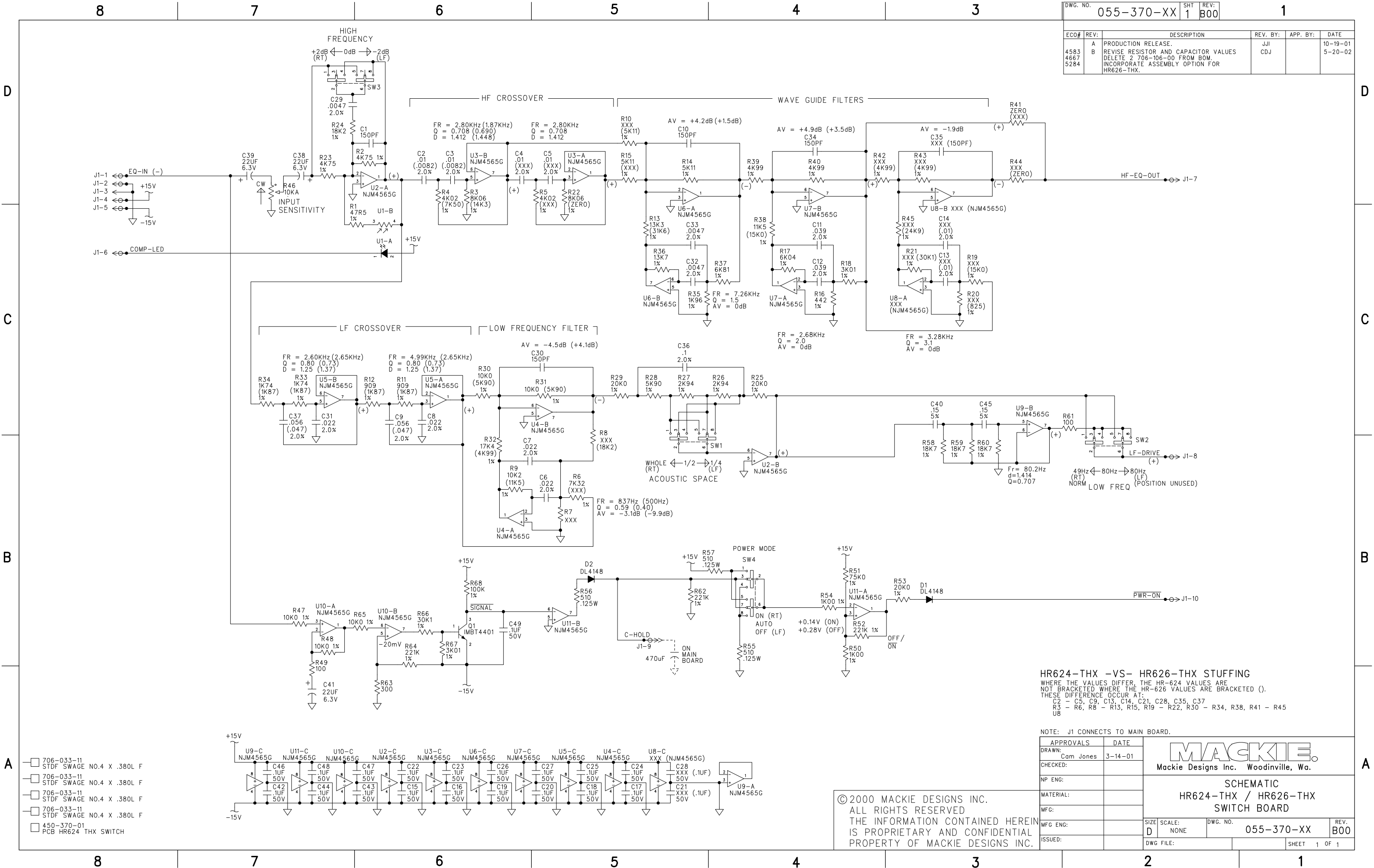
C

B

B

A

A



HR624-THX -VS- HR626-THX STUFFING
WHERE THE VALUES DIFFER, THE HR-624 VALUES ARE
NOT BRACKETED WHERE THE HR-626 VALUES ARE BRACKETED ().
THESE DIFFERENCE OCCUR AT:
C2 - C5, C9, C13, C14, C21, C28, C35, C37
R3 - R6, R8 - R13, R15, R19 - R22, R30 - R34, R38, R41 - R45
U8

NOTE: J1 CONNECTS TO MAIN BOARD.

APPROVALS	DATE	MACKIE Mackie Designs Inc. Woodinville, Wa.	
DRAWN: Cam Jones	3-14-01		
CHECKED:		SCHEMATIC HR624-THX / HR626-THX SWITCH BOARD	
NP ENG:			
MATERIAL:		SIZE SCALE: DWG. NO. REV. D NONE 055-370-XX B00	
MFG:			
MFG ENG:		DWG FILE: SHEET 1 OF 1	
ISSUED:			