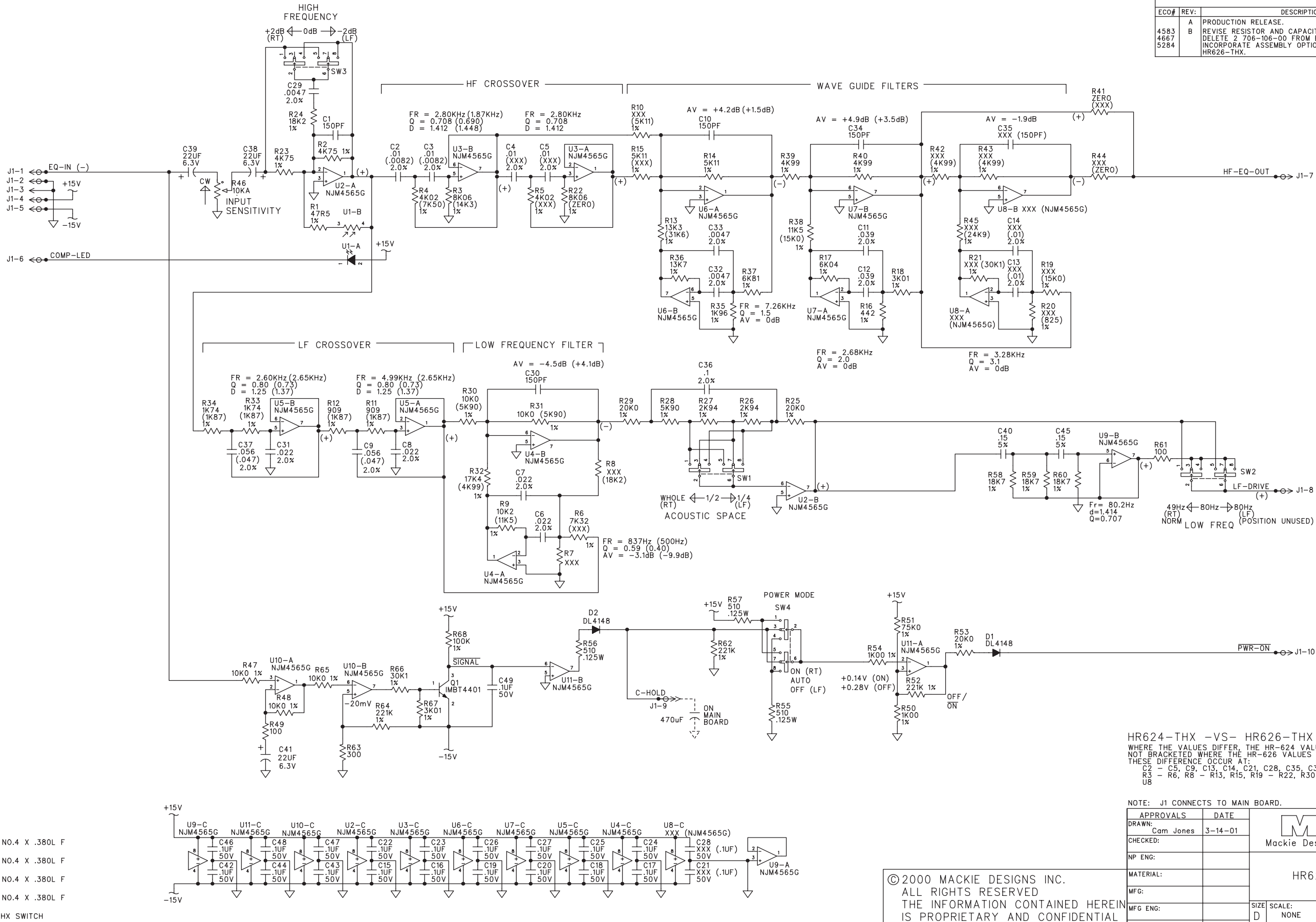
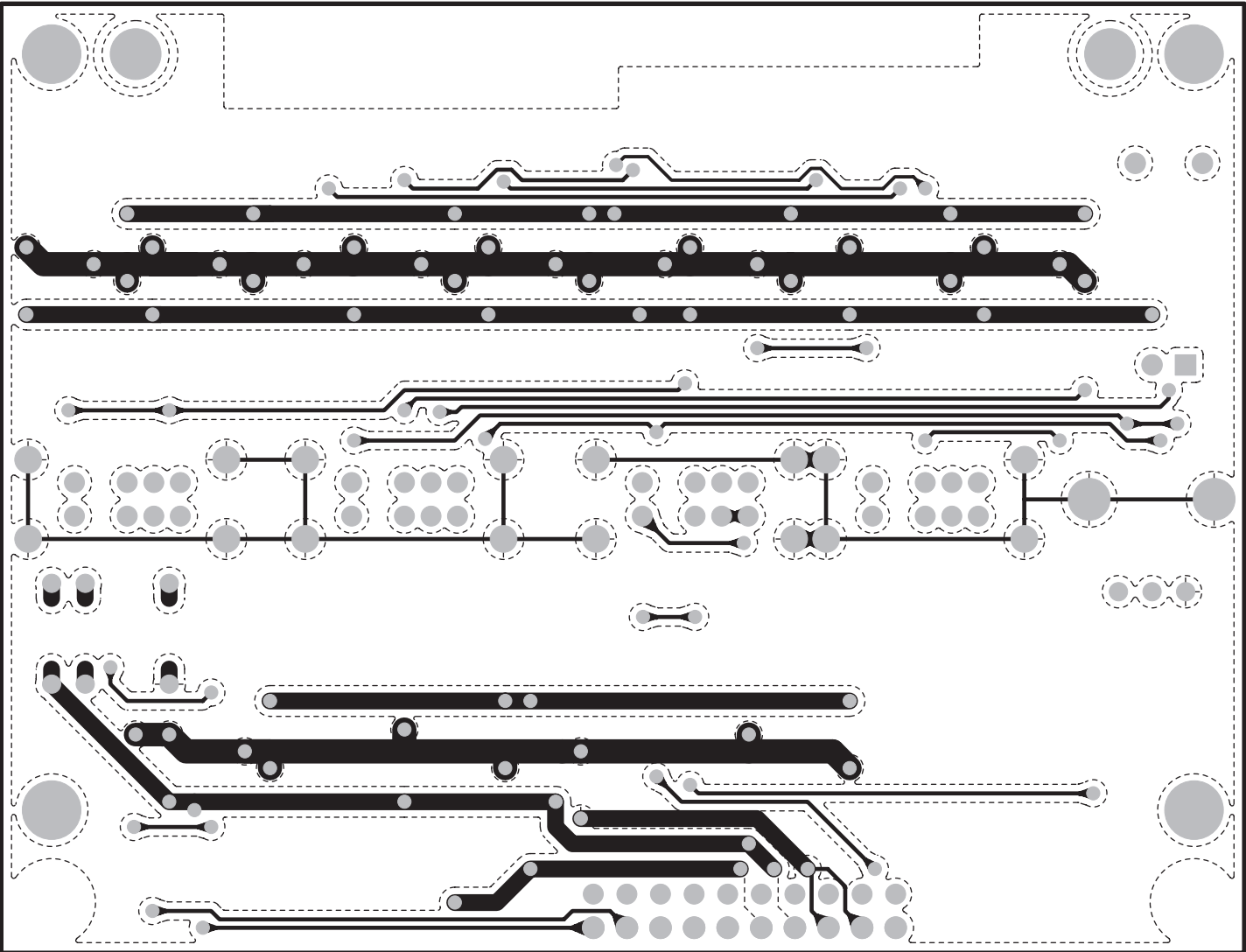
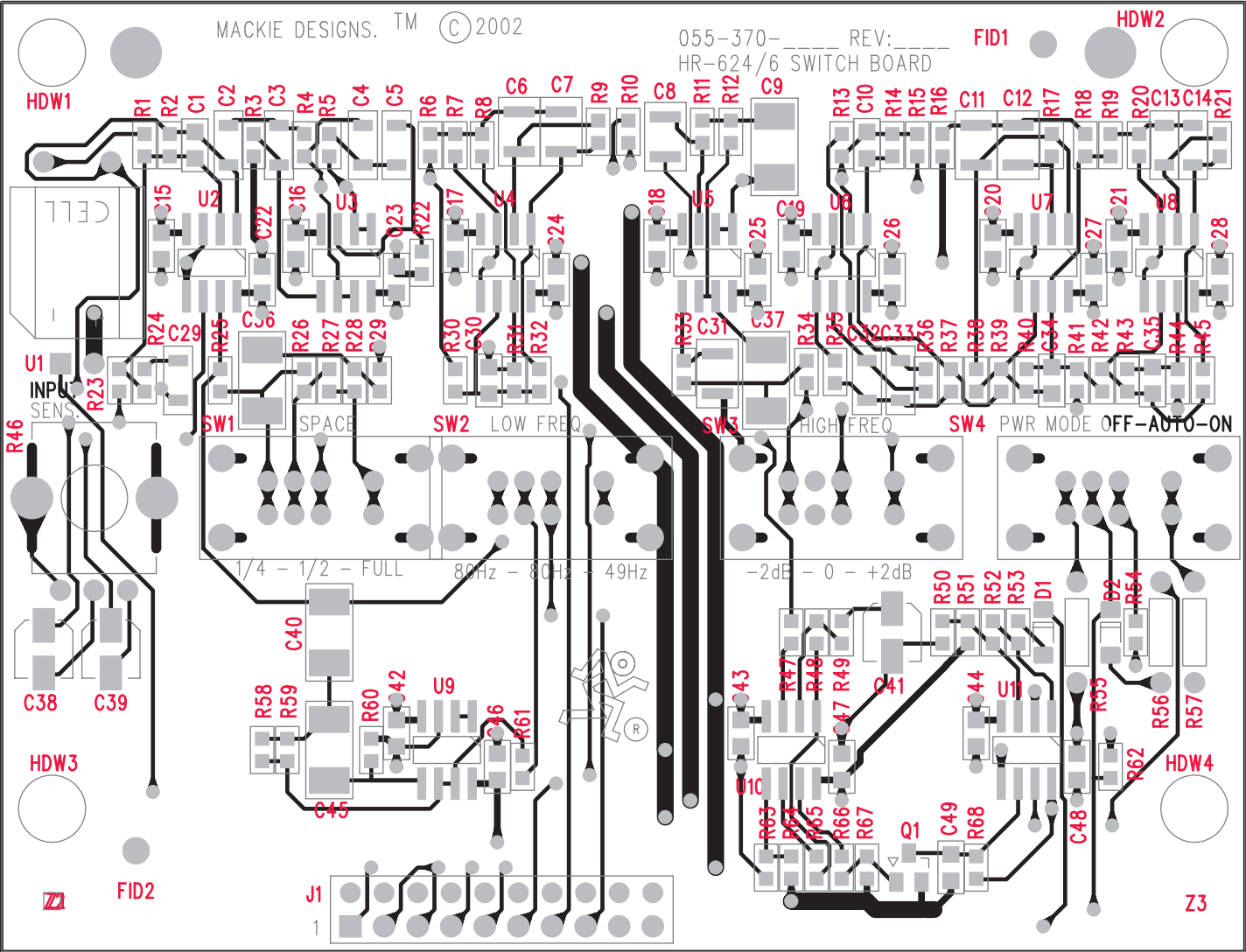


ECO#	REV:	DESCRIPTION	REV. BY:	APP. BY:	DATE
4583 4667 5284	A B	PRODUCTION RELEASE. REVISE RESISTOR AND CAPACITOR VALUES DELETE 2 706-106-00 FROM BOM. INCORPORATE ASSEMBLY OPTION FOR HR626-THX.	JJI CDJ		10-19-01 5-20-02



HR624-THX -VS- HR626-THX STUFFING
WHERE THE VALUES DIFFER, THE HR-624 VALUES ARE
NOT BRACKETED WHERE THE HR-626 VALUES ARE BRACKETED ().
THESE DIFFERENCE OCCUR AT:
C2 - C5, C9, C13, C14, C21, C28, C35, C37
R3 - R6, R8 - R13, R15, R19 - R22, R30 - R34, R38, R41 - R45
U8

© 2000 MACKIE DESIGNS INC.
ALL RIGHTS RESERVED
THE INFORMATION CONTAINED HEREIN
IS PROPRIETARY AND CONFIDENTIAL
PROPERTY OF MACKIE DESIGNS INC.



EQ-IN
GND
GND
+15V
-15V
LED
HF-OUT
LF-OUT
C-HOLD
PWR-ON