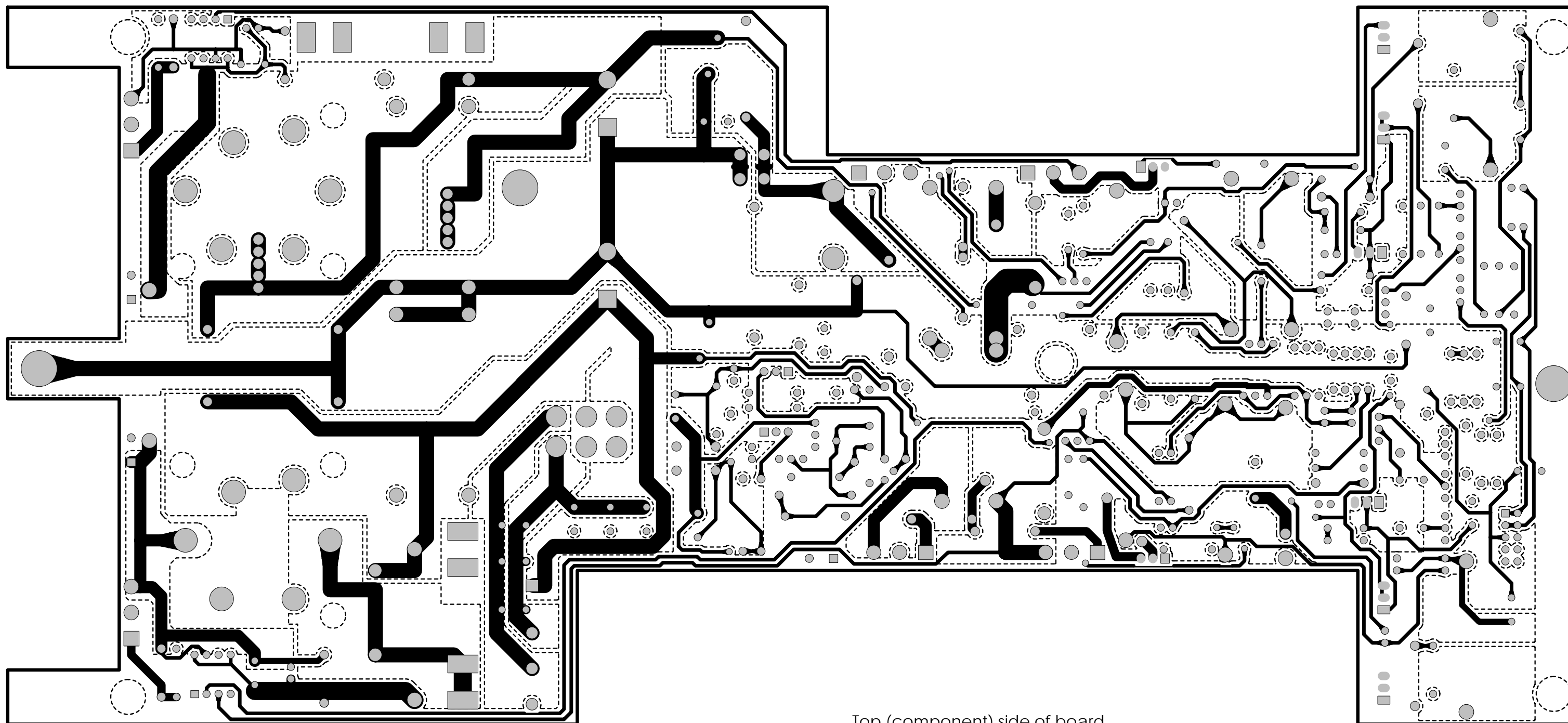
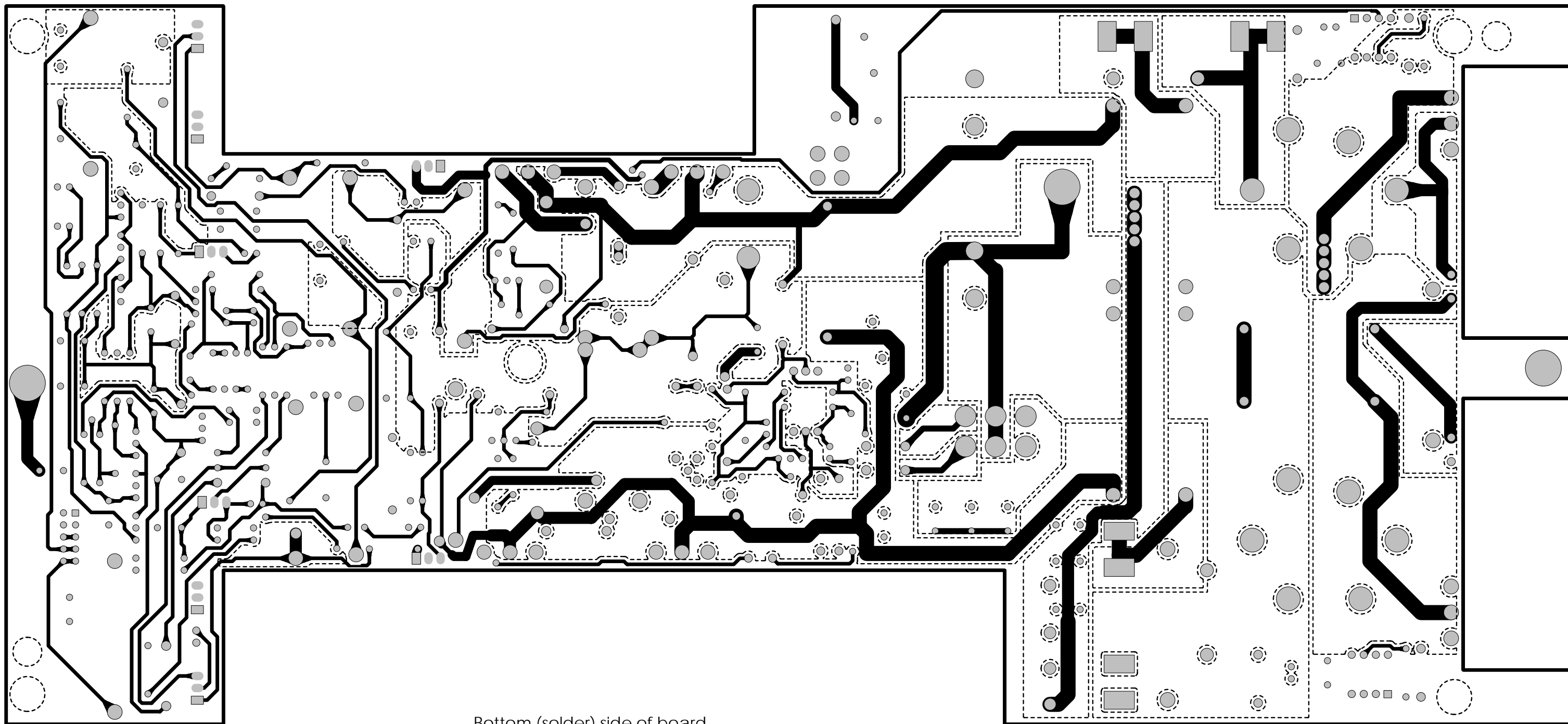


- | | | | | | |
|--------------------------|------|--------------|----|-----|--|
| <input type="checkbox"/> | Z4 | 450-269-00 | | | |
| | PCB, | SRS1500: AMP | | | |
| <input type="checkbox"/> | FC3 | 400-129-00 | | | |
| | FUSE | CLIP .25 DIA | PC | MNT | |
| <input type="checkbox"/> | FC4 | 400-129-00 | | | |
| | FUSE | CLIP .25 DIA | PC | MNT | |
| <input type="checkbox"/> | FC1 | 400-129-00 | | | |
| | FUSE | CLIP .25 DIA | PC | MNT | |
| <input type="checkbox"/> | FC2 | 400-129-00 | | | |
| | FUSE | CLIP .25 DIA | PC | MNT | |

<div>UNLESS OTHERWISE SPECIFIED DIMENSIONS ARE IN INCHES TOLERANCES ARE: FRACTIONS: DECIMALS: ANGLES: ±NA .XX ±.01 ±NA .XXX ±.005</div>	APPROVALS	DATE	<div>MACKIE.</div> <div>Mackie Designs Inc. Woodinville, Wa.</div>			
	DRAWN: STOLTZ	12-28-99				
	CHECKED:					
	NP ENG:					
MATERIAL: SEE NOTES	MATERIAL:		SCHEMATIC, SRS1500 AMP			
FINISH: SEE NOTES	MFG:					
DO NOT SCALE DRAWING	MFG ENG:		SIZE D	SCALE: NONE	DWG. NO. 990-269-00	REV. A
	ISSUED:		DWG FILE:			SHEET 1 OF 1



Top (component) side of board



Bottom (solder) side of board