


DRAWN		<div></div> <div>TECHNOLOGIES INC. WOODINVILLE WA. USA</div>		
CHECKED				
		SIZE	CODE IDENT NO.	DRAWING NO.
		D		0017052-00-D01
		SCALE		SHEET 1 OF 4

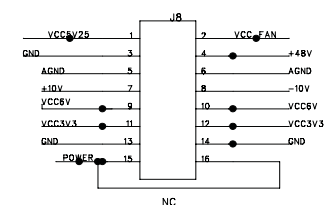
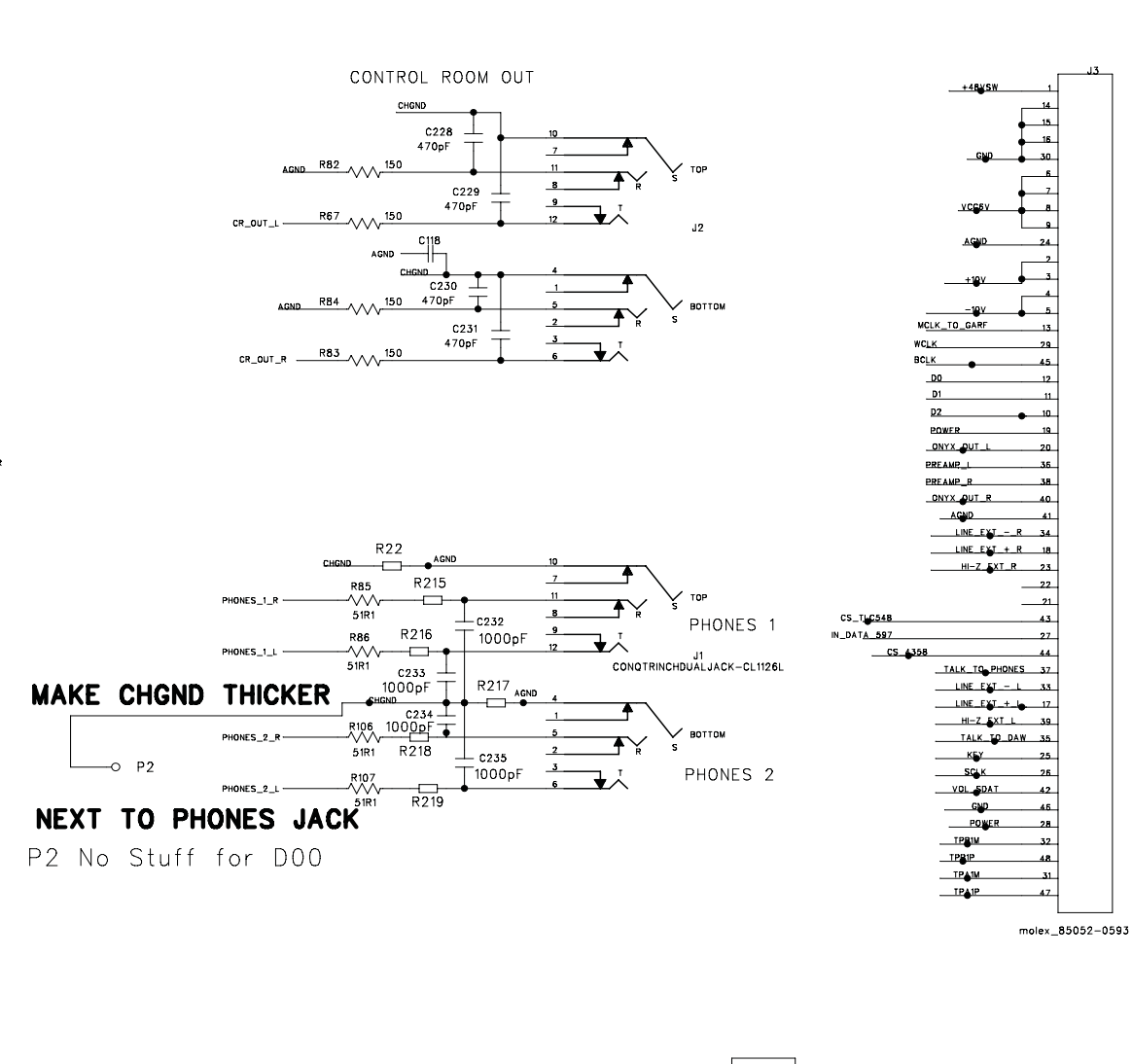
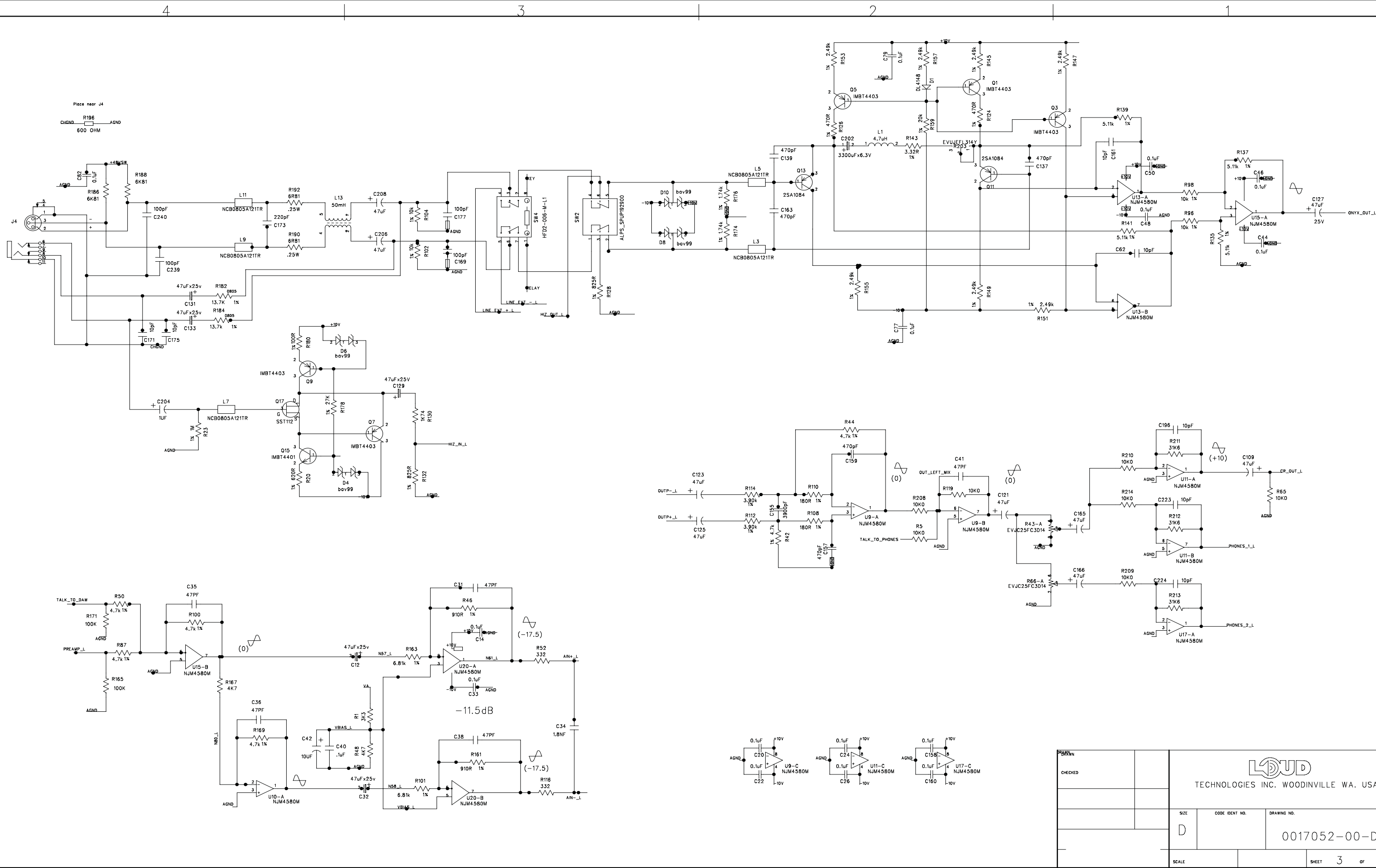
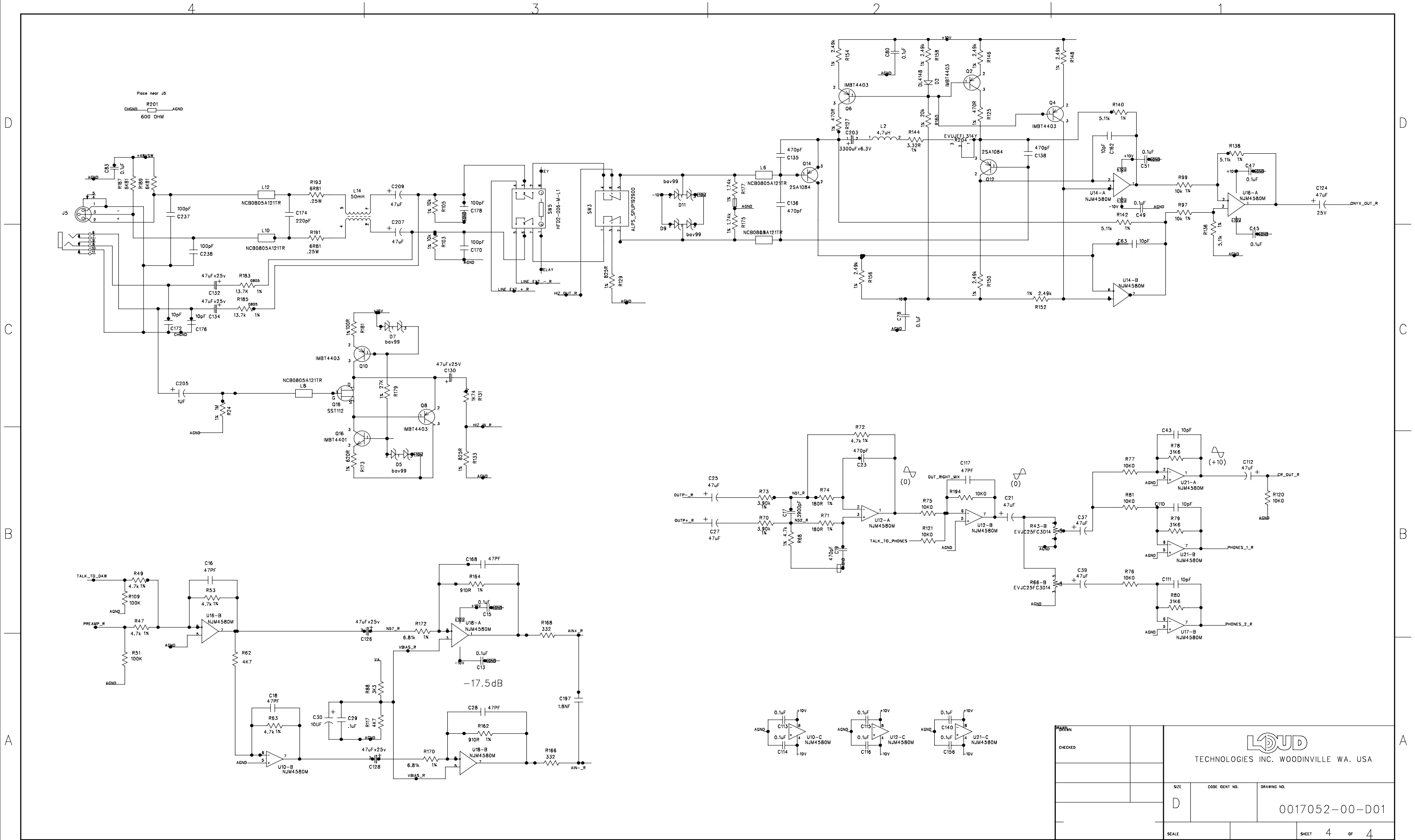


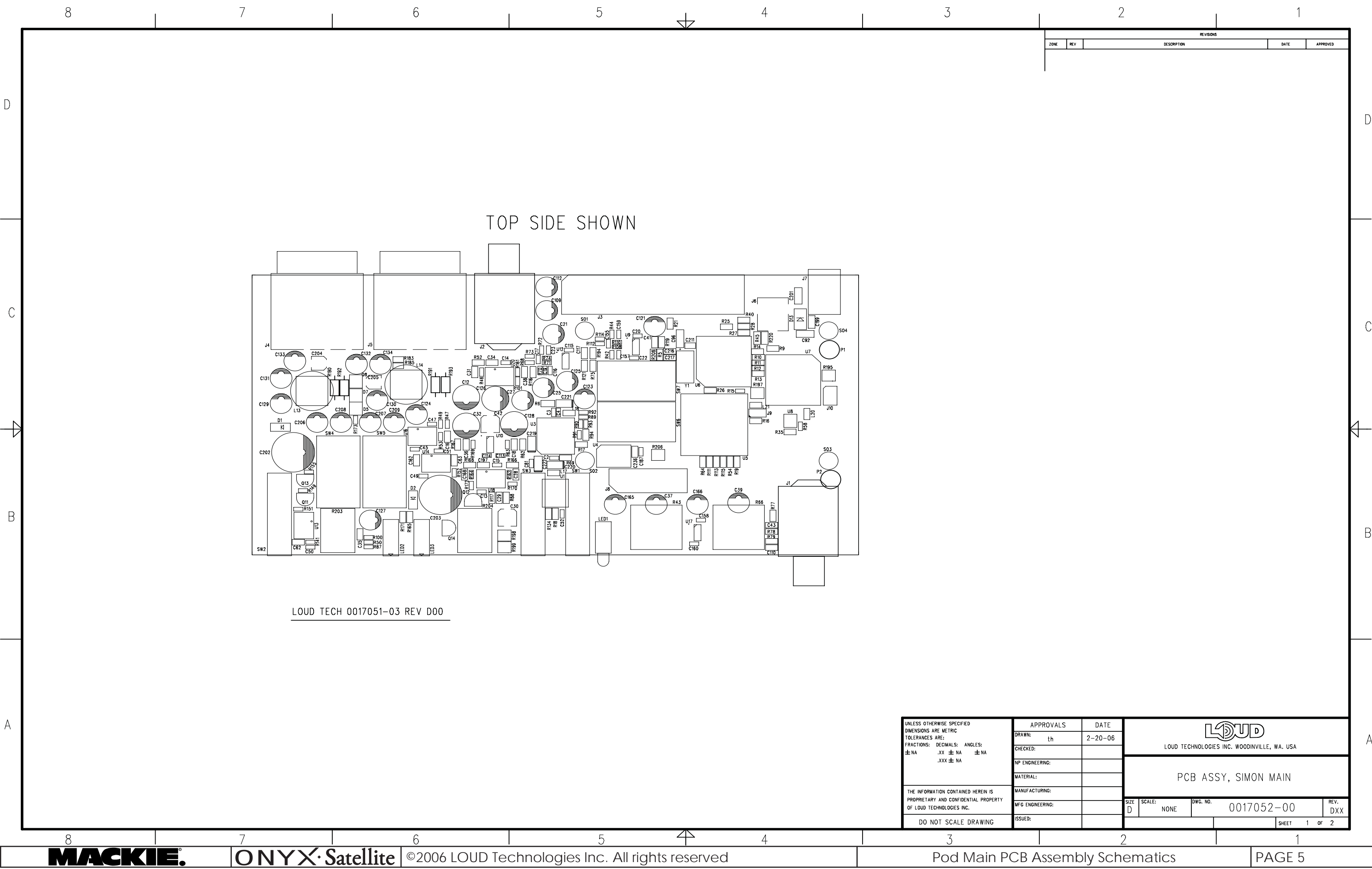
Diagram illustrating a 4-way parallel connection. A single vertical line on the left has four horizontal branches, each leading to a square symbol representing a component. To the right of each square is the text "STDF SWAGE M3 X 24MM 4.7 DIA".

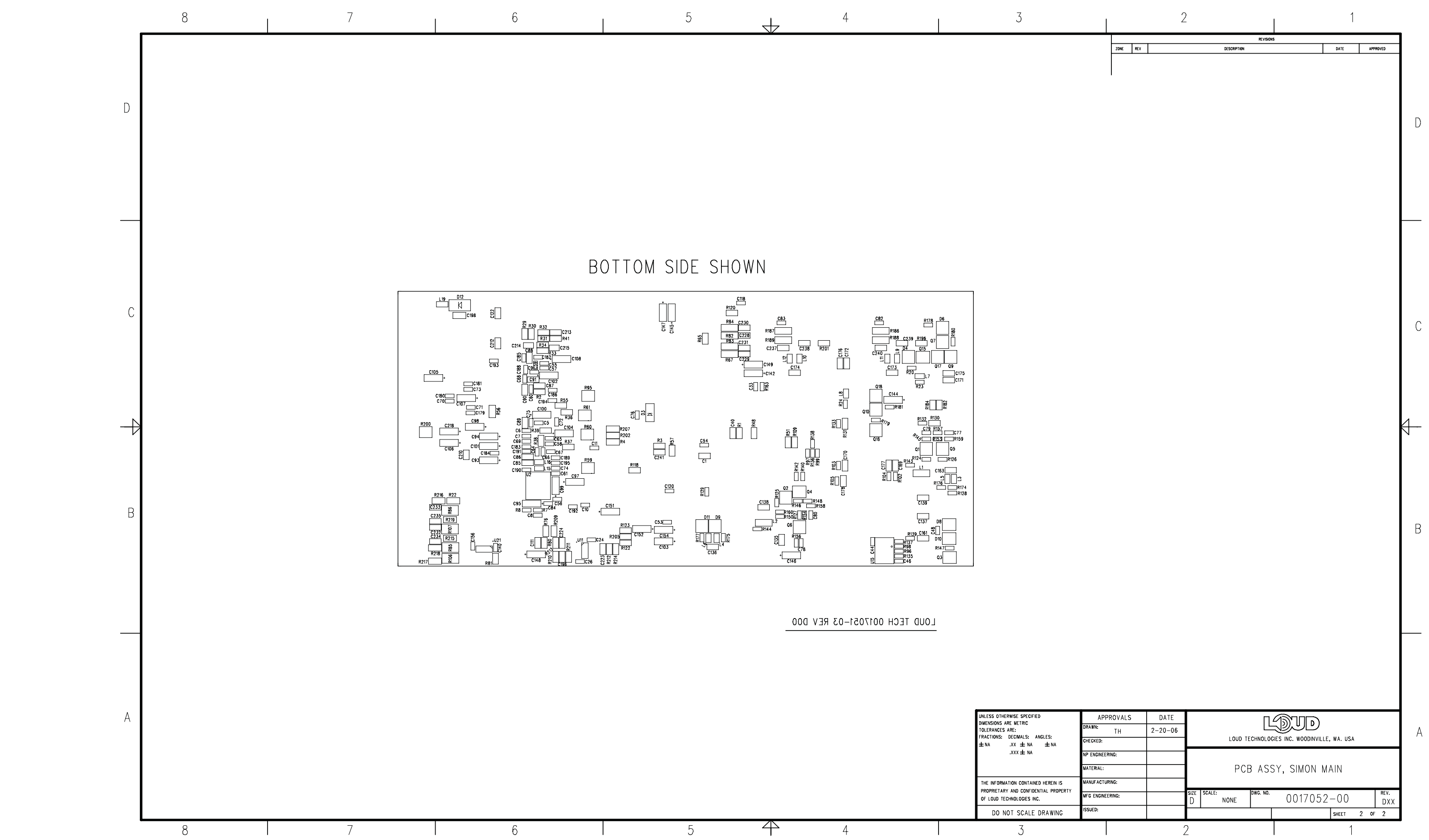
- ☐ BTN1
RND BUTTON CAP (7MM) "48V" WHITE BOTTOM
0012143-09
- ☐ BTN2
RND BUTTON CAP (7MM) CONTROL GRAY TOP WHITE BOTTOM
0012143-07
- ☐ BTN3
RND BUTTON CAP (7MM) CONTROL GRAY TOP WHITE BOTTOM
0012143-07

MACKIE®









REVISIONS				
ZONE	REV	DESCRIPTION	DATE	APPROVED

UNLESS OTHERWISE SPECIFIED DIMENSIONS ARE METRIC TOLERANCES ARE: FRACTIONS: DECIMALS: ANGLES: ± NA .XX ± NA ± NA .XXX ± NA	APPROVALS DRAWN: TH CHECKED: MP ENGINEERING: MATERIAL: MANUFACTURING: MFG ENGINEERING: ISSUED:	DATE 2-20-06	<div>LOUD</div> <div>LOUD TECHNOLOGIES INC. WOODINVILLE, WA. USA</div> <div>PCB ASSY, SIMON MAIN</div>
THE INFORMATION CONTAINED HEREIN IS PROPRIETARY AND CONFIDENTIAL PROPERTY OF LOUD TECHNOLOGIES INC.			
DO NOT SCALE DRAWING			

SIZE D	SCALE: NONE	DWG. NO. 0017052-00	REV. DXX	SHEET 2 OF 2