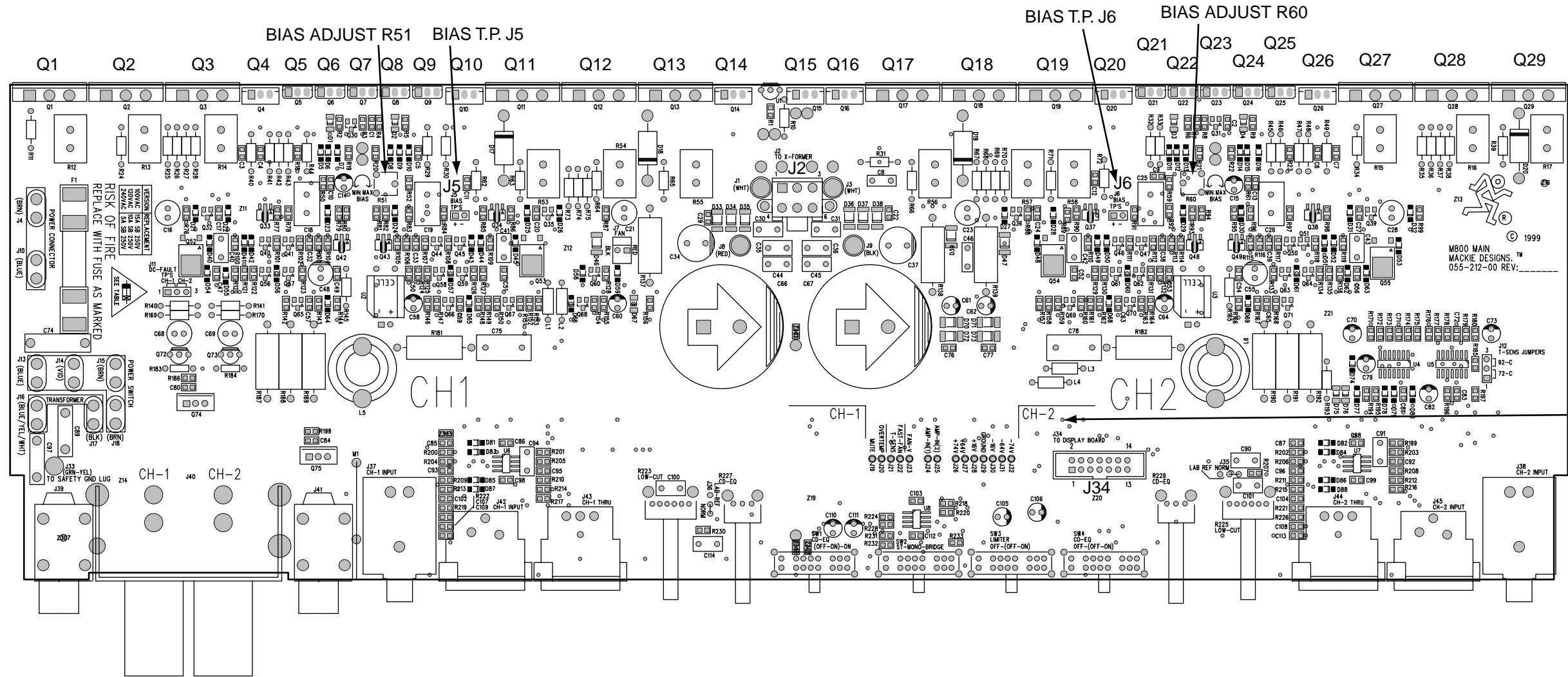


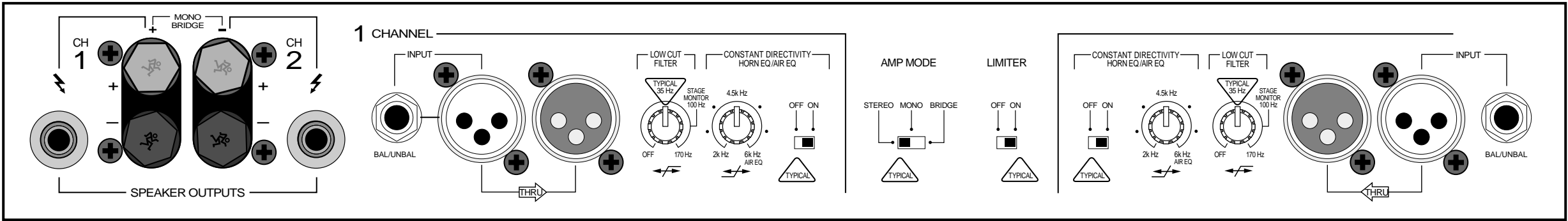
PART #	DESCRIPTION	TYPE	REFERENCE	PART #	DESCRIPTION	TYPE	REFERENCE
301-017-00	THY MBS4992	MBS4992	Q72-73	311-009-00	TRANSISTOR PNP SMD	2SA1552	Q52 Q55
301-026-00	TRIAC 200V 40A	MAC224A4	Q74-75	311-010-00	XSTR NPN 2SC4027-FA	2SC4027	Q53-54
310-028-00	TRANSISTOR PNP	2SB940A	Q16	311-019-00	TRANSISTOR PNP SMD	2SB792	Q41 Q45-46 Q50 Q58-59 Q61-62
310-029-00	TRANSISTOR NPN	2SD1264A	Q14-15	311-020-00	TRANSISTOR NPN SMD	2SD814	Q40 Q44 Q47 Q51 Q56-57 Q63-64
310-033-00	TRANSISTOR PNP	MJL21193	Q11-13 Q17-19	320-012-00	OPAMP NJM4560M	NJM4560M	U6-8
310-034-00	TRANSISTOR NPN	MJL21194	Q1-3 Q27-29	323-002-00	QUAD COMPARATOR	LM339	U4-5
310-035-00	TRANSISTOR PNP	2SA1478	Q6 Q9 Q21 Q24	329-012-00	OPTO-ISO,LED/CDS	VTL5C10	U2-3
310-036-00	TRANSISTOR NPN	2SC3788	Q5 Q8 Q22 Q25	329-014-00	IC, TEMP SENSOR	LM35DZ	U1
310-042-00	TRANSISTOR NPN	MJE15032	Q4 Q26				
310-043-00	TRANSISTOR PNP	MJE15033	Q10 Q20				
310-049-00	TRANSISTOR PNP	2SA794A	Q7 Q23				
311-001-00	XSTR NPN IMBT4401 SM	IMBT4401	Q30-32 Q39 Q60 Q65 Q68 Q71				
311-002-00	X-SISTOR PNP SMD	IMBT4403	Q35-36 Q66-67 Q69-70				
311-007-00	XSTR PNP 2SA1415	2SA1415	Q33 Q38 Q42 Q49				
311-008-00	TRANSISTOR NPN SMD	2SC3645	Q34 Q37 Q43 Q48				



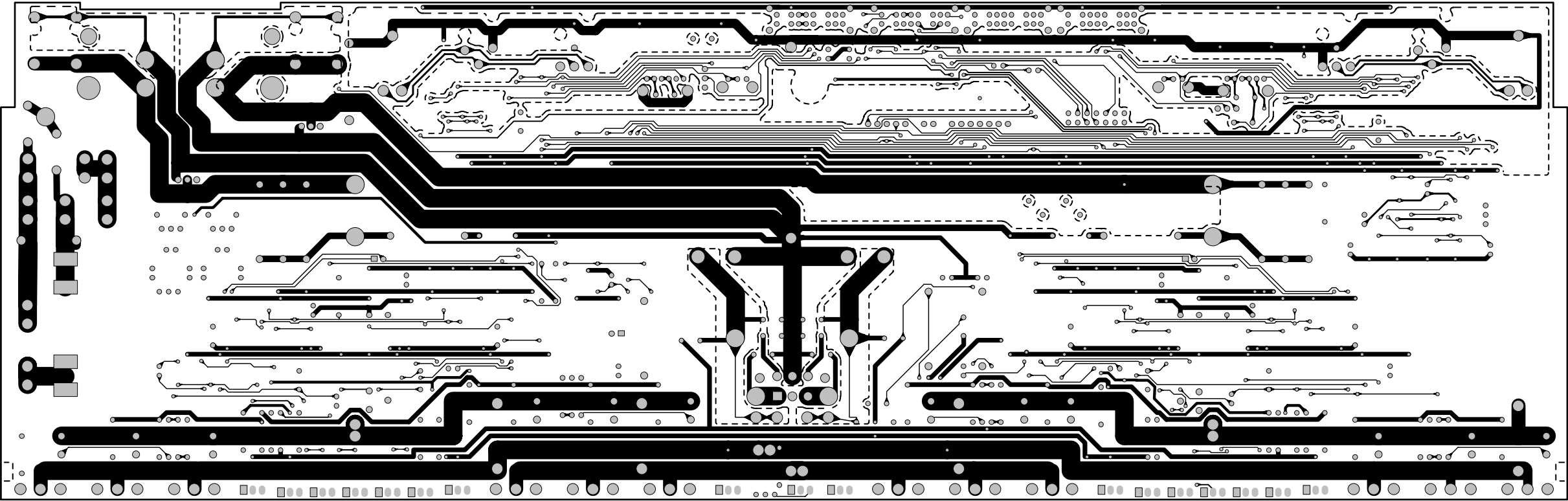
MUTE: HIGH TRUE WHEN HEATSINK OVER 86-C, DURING FIRST 4SEC OF OPERATION, OR WHEN AC INPUT IS 65% OF NOMINAL.
OVERTEMP: LOW TRUE WHEN HEATSINK OVER 86-C. RESET AT 61-C.
T-SENS: MONITOR OF HEATSINK TEMPERATURE (10mV/DEG-C)
FAST-FAN: LOW TRUE WHEN HEATSINK OVER 86-C, OR OVER 60-C AND OUTPUT LEVEL HIGH.
FAN-V: VOLTAGE APPLIED TO THE FAN. APPROX. 15V WHEN FAST-FAN LINE HIGH AND 27V WHEN LOW.

TEST POINTS

- AMP-IN(1) J24
- AMP-IN(2) J25
- MUTE J19
- OVERTEMP J20
- T-SENS J21
- FAST-FAN J22
- FAN-V J23
- +74V J26
- +64V J27
- +16V J28
- 16V J29
- 64V J31
- 74V J32



Bottom surface



Top surface

